

(MEARZ7.MEARZ) 23334

MEARZ SEVEN DEPARTURE

AL-5514 (FAA)

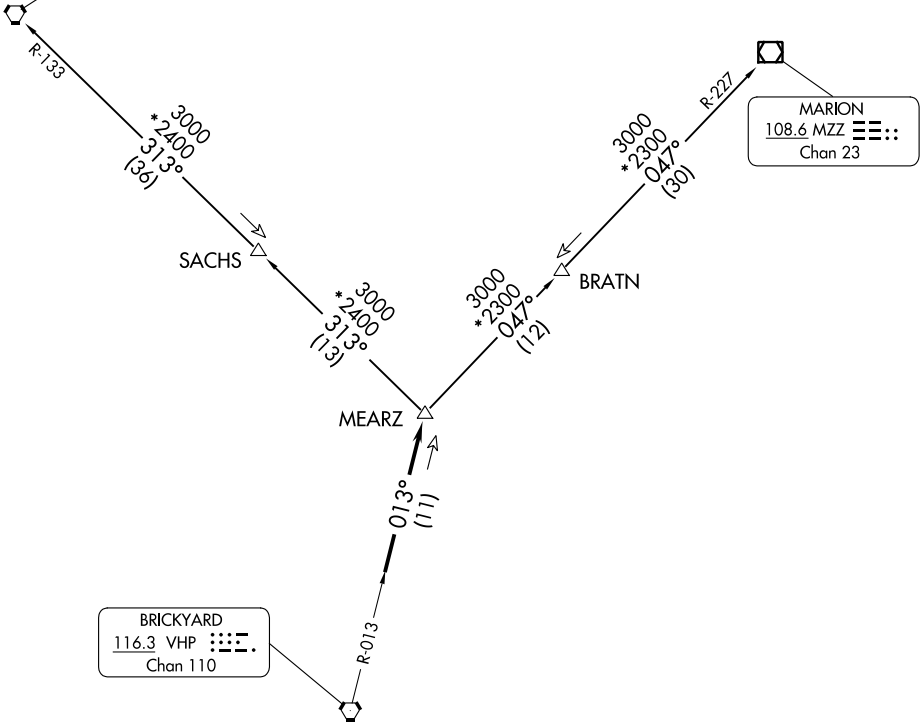
SHELBYVILLE MUNI (GEZ)
SHELBYVILLE, INDIANA

**TOP ALTITUDE:
ASSIGNED BY ATC**

RADAR required.

ASOS
121.55
INDIANAPOLIS DEP CON
127.15 317.8

BOILER
115.1 BVT
Chan 98



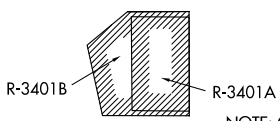
BRICKYARD
116.3 VHP
Chan 110

MARION
108.6 MZZ
Chan 23

TAKEOFF MINIMUMS

Rwy 1, 19: Standard.
Rwy 9, 27: NA - Environmental

- NOTE: Turbojets accelerate to 250K until reaching 10000, if unable advise ATC.
- NOTE: Assigned to aircraft with a requested altitude of 11000 or above.
- NOTE: Select appropriate localizer/DME frequency/channel prior to departure.



NOTE: Chart not to scale.

(NARRATIVE ON FOLLOWING PAGE)

EC-2, 26 DEC 2024 to 23 JAN 2025

EC-2, 26 DEC 2024 to 23 JAN 2025

MEARZ SEVEN DEPARTURE
(MEARZ7.MEARZ) 19MAY22

SHELBYVILLE, INDIANA
SHELBYVILLE MUNI (GEZ)