

LOC/DME I-PGV 110.7 Chan 44	APP CRS 197°	Rwy Idg 6505 TDZE 25 Apt Elev 26
---	------------------------	---

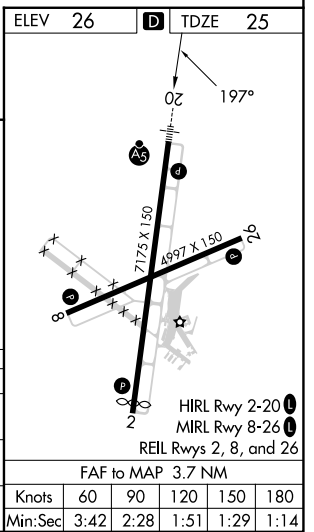
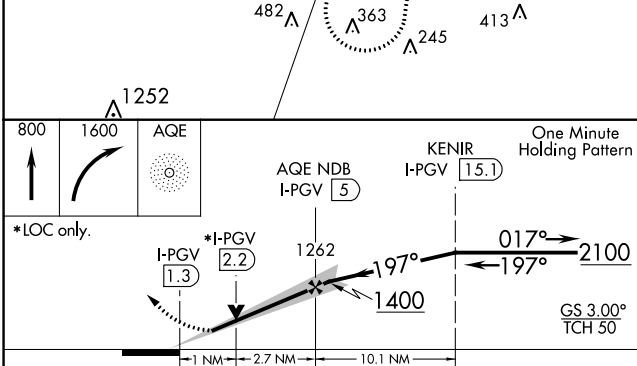
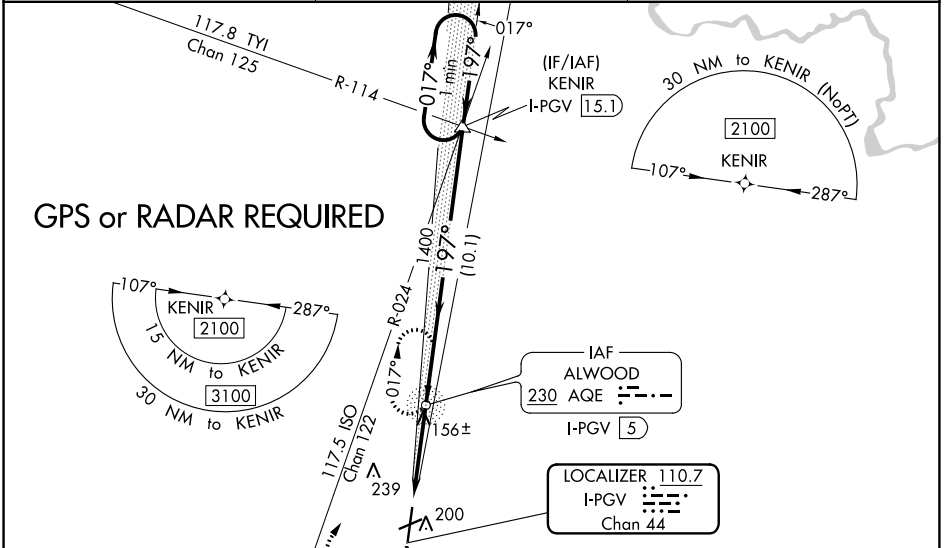
ILS Y or LOC Y RWY 20

PITT-GREENVILLE (PGV)

ADF required. VDP NA with Washington altimeter setting. When local altimeter setting not received use Washington altimeter setting and increase S-ILS 20 DA to 298 feet; increase all MDAs 60 feet and S-LOC 20 visibility Cat C/D 1/2 SM, and Circling visibility Cat D 1/4 SM. For inop ALS when using Washington altimeter setting, increase S-ILS 20 all Cats visibility 3/8 SM, and S-LOC 20 visibility Cat A/B 1/4 SM. Inop table does not apply to S-ILS all Cats. Rwy 20 helicopter visibility reduction below 3/4 SM NA. For inop ALS, increase S-LOC 20 visibility Cat A/B 1/4 SM, Cat C/D 3/8 SM.

MALSR
MISSED APPROACH: Climb to 800 then climbing right turn to 1600 direct AGE NDB and hold.

AWOS-3 128.425	WASHINGTON CENTER 123.85 279.65	UNICOM 122.8 (CTAF) 1
--------------------------	---	---------------------------------



CATEGORY	A	B	C	D
S-ILS 20		257-3/4	231 (300-3/4)	
S-LOC 20		420-3/4	394 (400-3/4)	
CIRCLING	600-1 574 (600-1)	620-1 594 (600-1)	700-2 674 (700-2)	800-2 1/2 774 (800-2 1/2)

SE-2, 26 DEC 2024 to 23 JAN 2025

SE-2, 26 DEC 2024 to 23 JAN 2025