

LOC I-UCY 109.7	APP CRS 006°	Rwy Idg 6503 TDZE 346 Apt Elev 346
---------------------------	------------------------	---

ILS or LOC RWY 1

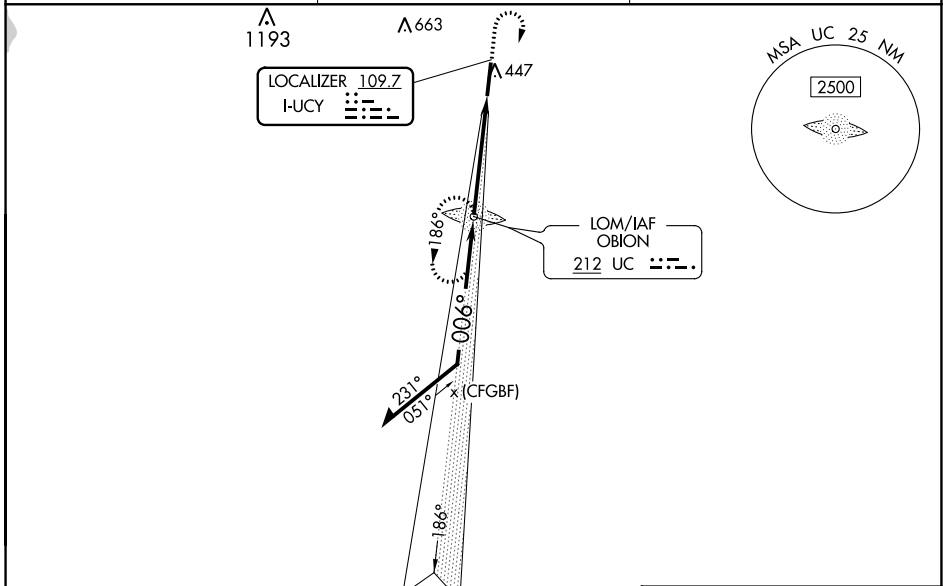
EVERETT-STEWART RGNL (UCY)

NA ADF required. When local altimeter setting not received, use Dyersburg altimeter setting and increase all DA 72 feet and all MDA 80 feet, increase S-LOC 1 Cat C/D visibility to 1 3/4 mile, Circling Cat C visibility to 1 3/4 mile and Circling Cat D visibility to 2 1/2 mile. Inop table does not apply to S-ILS 1. For inop ODALS, increase S-LOC 1 Cat C/D visibility to 1 3/4 mile. For inop ODALS when using Dyersburg altimeter setting, increase S-ILS 1 all Cats visibility to 3/4 mile and S-LOC 1 Cat D visibility to 1 3/4 mile.

ODALS

MISSED APPROACH:
Climb to 1300 then climbing right turn to 2500 direct OBION LOM and hold.

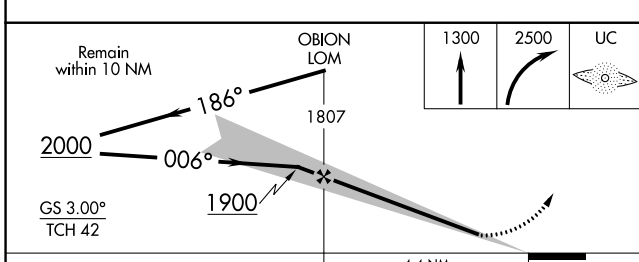
AWOS-3 135,325	MEMPHIS CENTER 133.65 292.15	UNICOM 122.7 (CTAF)
--------------------------	--	-------------------------------



SE-1, 26 DEC 2024 to 23 JAN 2025

SE-1, 26 DEC 2024 to 23 JAN 2025

ADF and RADAR REQUIRED



ELEV 346	TDZE 346
MIRL Rwy 1-19	61
REIL Rwy 1 and 19	

FAF to MAP 4.4 NM
Knots 60 90 120 150 180
Min:Sec 4:24 2:56 2:12 1:46 1:28

CATEGORY	A	B	C	D
S-ILS 1		546-3/4	200 (200-3/4)	
S-LOC 1	820-3/4	474 (500-3/4)	820-1 1/4	474 (500-1 1/4)
C CIRCLING	820-1	474 (500-1)	820-1 1/2	1020-2 1/4 474 (500-1 1/2) 674 (700-2 1/4)