

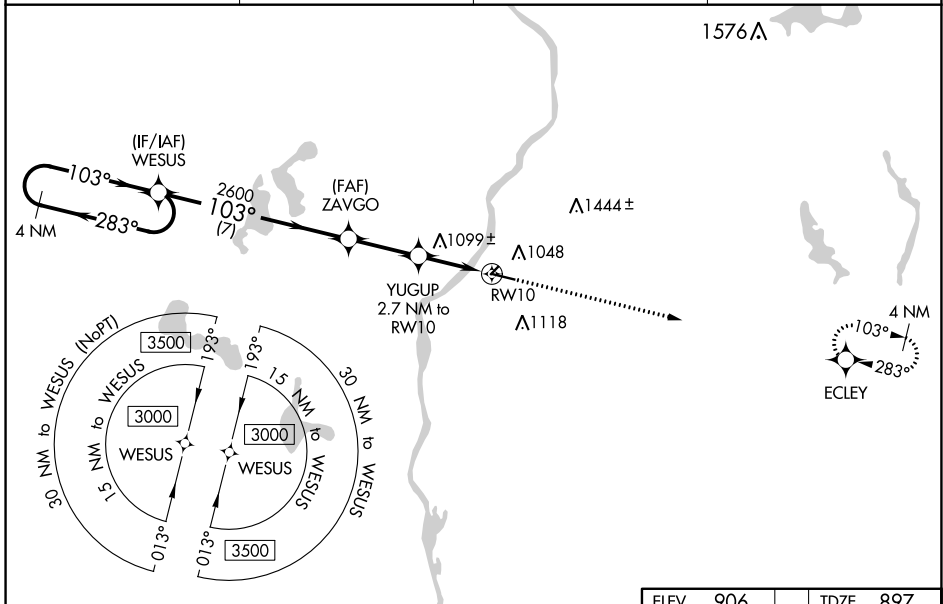
WAAS CH 69532 W10A	APP CRS 103°	Rwy ldg TDZE Apt Elev	5006 897 906
--	------------------------	-----------------------------	---

RNAV (GPS) RWY 10

L O SIMENSTAD MUNI (O/E O)

RNP APCH - GPS.	<p>MISSED APPROACH: Climb to 3000 direct ECLEY and hold.</p>
<p>▼ For uncompensated Baro-VNAV systems, LNAV/VNAV NA below -16°C or above 54°C. VDP and Baro-VNAV NA when using Anoka County/Blaine (Janes Fld) altimeter setting. When local altimeter setting not received, use Anoka County/Blaine (Janes Fld) altimeter setting; increase LPV DA to 1204 feet and visibility all Cats ½ SM; increase LNAV/VNAV DA to 1247 feet and visibility all Cats ¼ SM; increase all MDAs 60 feet and visibility LNAV Cat C ¼ SM and Circling Cat C ¼ SM. Rwy 10 helicopter visibility reduction below ¾ SM NA. Circling NA to Rws 4 and 22.</p>	

AWOS-3 119.925	MINNEAPOLIS APP CON 121.2 335.65	GCO 121.725	CTAF 122.9
--------------------------	--	-----------------------	----------------------



4 NM Holding Pattern WESUS		ELEV 906	TDZE 897	
<p>3000 ← 283° → 103° →</p> <p>GP 3.00° TCH 35</p> <p>ZAVGO 2600</p> <p>YUGUP 2.7 NM to RW10</p> <p>*1.4 NM to RW10</p> <p>RW10</p> <p>*1760</p> <p>7 NM 2.6 NM 1.3 NM 1.4 NM</p>		<p>3000 ↑</p> <p>ECLEY</p> <p>*LNAV only</p>		
CATEGORY	A	B	C	D
LPV DA	1147-7/8 250 (300-7/8)			NA
LNAV/VNAV DA	1190-1 293 (300-1)			NA
LNAV MDA	1360-1	463 (500-1)	1360-1 3/8 463 (500-1 3/8)	NA
C CIRCLING	1360-1 454 (500-1)	1500-1 594 (600-1)	1520-1 3/4 614 (700-1 3/4)	NA

EC-3, 26 DEC 2024 to 23 JAN 2025

EC-3, 26 DEC 2024 to 23 JAN 2025