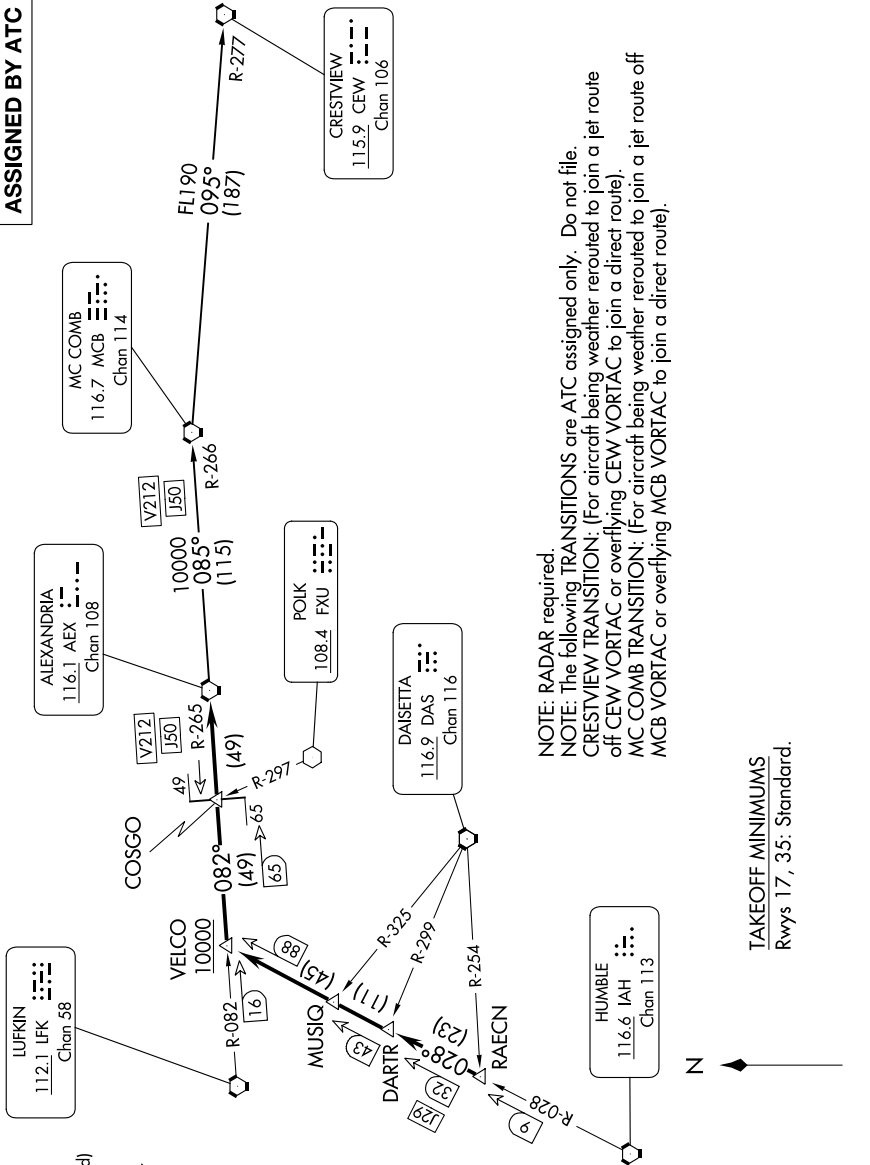


# ALEXANDRIA THREE DEPARTURE

**TOP ALTITUDE:  
ASSIGNED BY ATC**

ATIS \*  
 118.125  
 CLNC DEL  
 121.4  
 CLNC DEL  
 CLNC DEL  
 119.25 (when nwr closed)  
 GND CON  
 121.4  
 SUGARLAND TOWER \*  
 118.65 (CTAF)  
 HOUSTON DEP CON  
 123.8 257.7



CRESTVIEW  
 115.9 CEW  
 Chan 106

MC COMB  
 116.7 MCB  
 Chan 114

ALEXANDRIA  
 116.1 AEX  
 Chan 108

POLK  
 108.4 FXU  
 Chan 116

DAISETTA  
 116.9 DAS  
 Chan 116

HUMBIE  
 116.6 IAH  
 Chan 113

TAKEOFF MINIMUMS  
 Rwy 17, 35: Standard.

NOTE: RADAR required.  
 NOTE: The following TRANSITIONS are ATC assigned only. Do not file.  
 CRESTVIEW TRANSITION: (For aircraft being weather rerouted to join a jet route off CEW VORTAC or overflying CEW VORTAC to join a direct route).  
 MC COMB TRANSITION: (For aircraft being weather rerouted to join a jet route off MCB VORTAC or overflying MCB VORTAC to join a direct route).



NOTE: Chart not to scale.

(CONTINUED ON FOLLOWING PAGE)

# ALEXANDRIA THREE DEPARTURE