

# WYLSN EIGHT DEPARTURE (RNAV)

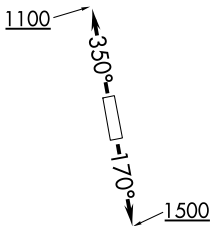
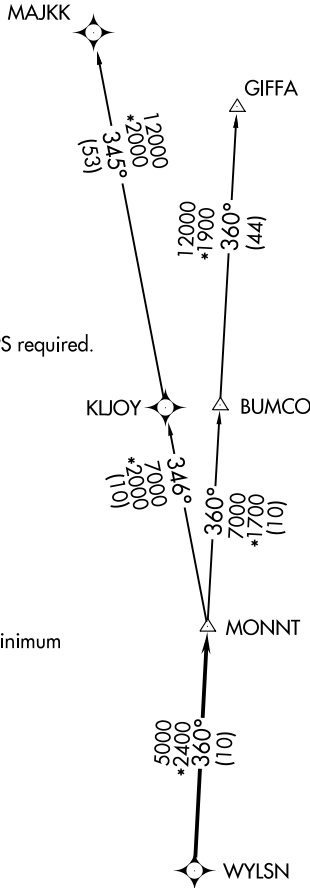
ATIS\*  
 118.125  
 CLNC DEL  
 121.4  
 CLNC DEL  
 119.25 (when twr closed)  
 GND CON  
 121.4  
 SUGAR LAND TOWER\*  
 118.65 (CTAF)  
 HOUSTON DEP CON  
 123.8 257.7

**TOP ALTITUDE:  
 ASSIGNED BY ATC**

NOTE: RADAR required.  
 NOTE: DME/DME/IRU or GPS required.  
 NOTE: RNAV 1.

### TAKEOFF MINIMUMS

Rwy 17, 35: Standard with minimum  
 climb of 500' per NM to 600.



### DEPARTURE ROUTE DESCRIPTION

TAKEOFF RUNWAY 17: Climb on heading 170° to 1500 for RADAR vectors to WYLSN, thence. . . .

TAKEOFF RUNWAY 35: Climb on heading 350° to 1100 for RADAR vectors to WYLSN, thence. . . .

. . . .on track 360° to MONNT, then on (transition).  
 Maintain ATC assigned altitude. Expect filed altitude 10 minutes after departure.

GIFFA TRANSITION (WYLSN8.GIFFA)

MAJKK TRANSITION (WYLSN8.MAJKK)

NOTE: Chart not to scale.

# WYLSN EIGHT DEPARTURE (RNAV)