

WAAS CH <b>45841</b> <b>W14A</b>	APP CRS <b>136°</b>	Rwy Idg TDZE Apt Elev	<b>3650</b> <b>1245</b> <b>1245</b>
--	------------------------	-----------------------------	---

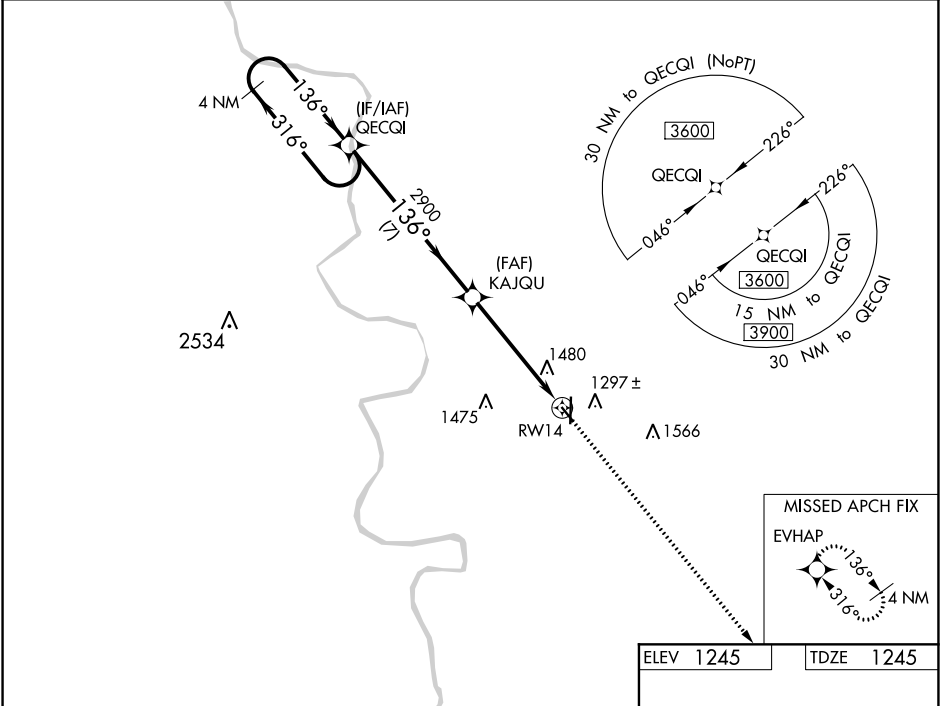
# RNAV (GPS) RWY 14

COUNCIL BLUFFS MUNI (CBF)

⚠ For uncompensated Baro-VNAV systems, LNAV/VNAV NA below -18°C (0°F) or above 54°C (130°F). Rwy 14 helicopter visibility reduction below ¾ SM NA. DME/DME RNP-0.3 NA.

MISSED APPROACH: Climb to 3900 direct EVHAP and hold.

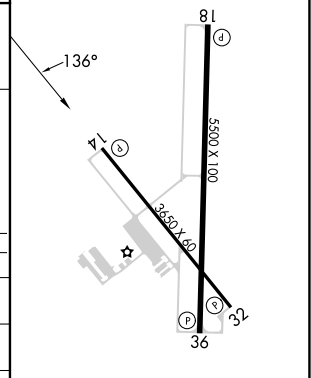
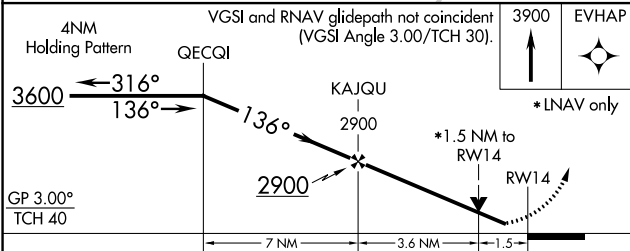
AWOS-3 <b>126.575</b>	OMAHA APP CON <b>124.5 263.0</b>	CLNC DEL <b>127.675</b>	UNICOM <b>122.725</b> (CTAF) <b>0</b>
--------------------------	-------------------------------------	----------------------------	--



NC-3, 26 DEC 2024 to 23 JAN 2025

NC-3, 26 DEC 2024 to 23 JAN 2025

ELEV 1245	TDZE 1245
-----------	-----------



CATEGORY	A	B	C	D
LPV DA	1495-¾	250 (300-¾)		
LNAV/VNAV DA	1816-1⅞	571 (600-1⅞)		
LNAV MDA	1740-1	495 (500-1)	1740-1⅜	495 (500-1⅜)
CIRCLING	1780-1	535 (600-1)	1780-1½	1880-2 635 (700-2)

MIRL Rwy 14-32 **0**  
HIRL Rwy 18-36 **0**  
REL Rws 14, 32, 18, and 36 **0**