

WAAS CH 53606 W36A	APP CRS 357°	Rwy Idg TDZE 1245 Apt Elev 1245
---------------------------------	------------------------	---

RNAV (GPS) RWY 36

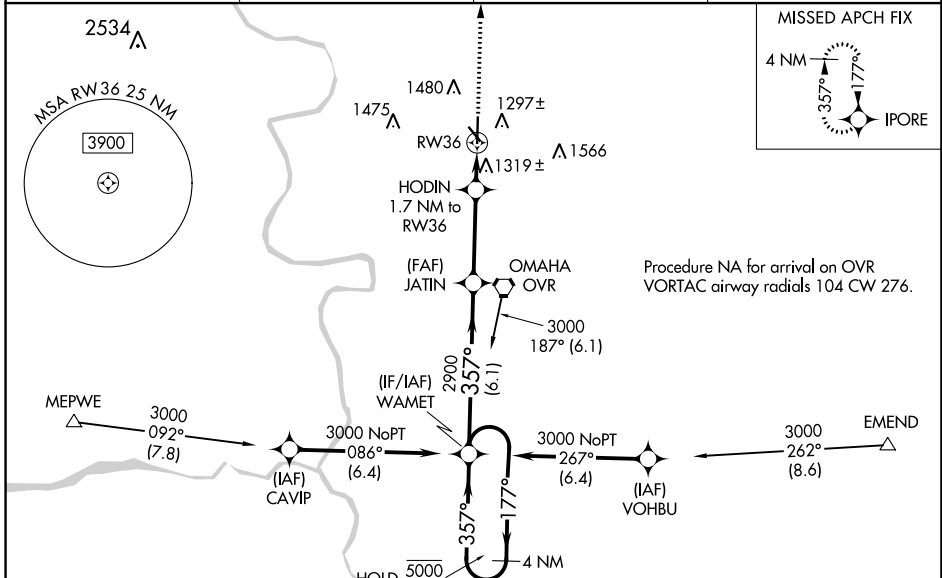
COUNCIL BLUFFS MUNI (CBF)

RNP APCH.

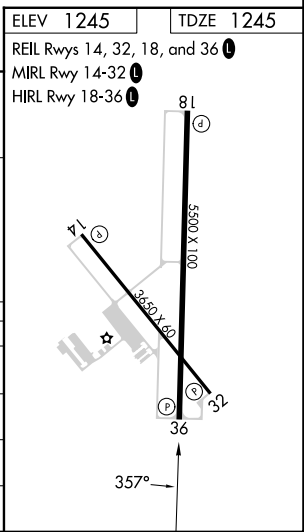
⚠ Baro-VNAV and VDP NA when using Eppley Airfield altimeter setting. For uncompensated Baro-VNAV systems, LNAV/VNAV NA below -17°C or above 54°C. When local altimeter setting not received, use Eppley Airfield altimeter setting and increase LPV DA to 1498 feet, LNAV/VNAV DA to 1548 feet, and all MDA 60 feet and increase LNAV/VNAV all Cats visibility 1/2 SM, LNAV Cat C and D visibility 1/2 SM, and Circling Cat C and D visibility 1/4 SM.

MISSED APPROACH: Climb to 3000 direct IPORE and hold.

AWOS-3 126.575	OMAHA APP CON 124.5 263.0	CLNC DEL 127.675	UNICOM 122.725 (CTAF)
--------------------------	-------------------------------------	----------------------------	---------------------------------



ELEV 1245		TDZE 1245	
REIL Rwy 14, 32, 18, and 36			
MIRL Rwy 14-32			
HIRL Rwy 18-36			
4 NM Holding Pattern		3000 IPORE	
5000	← 177°	*NNAV only	
3000	→ 357°	*0.9 NM to RW36	
GP 3.00°		RW36	
TCH 50		*1820	
6.1 NM		3.4 NM	
0.8 NM		0.9 NM	
CATEGORY	A	B	C
LPV DA		1445-3/4	200 (200-3/4)
LNAV/VNAV DA		1495-3/4	250 (300-3/4)
LNAV MDA		1580-1	335 (400-1)
CIRCLING	1780-1 535 (600-1)	1840-1 595 (600-1)	1840-1 1/2 595 (600-1 1/2)
			1880-2 635 (700-2)



NC-3, 26 DEC 2024 to 23 JAN 2025

NC-3, 26 DEC 2024 to 23 JAN 2025