

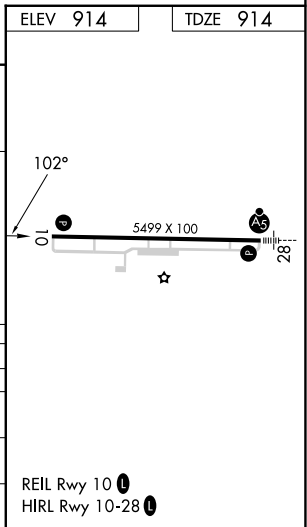
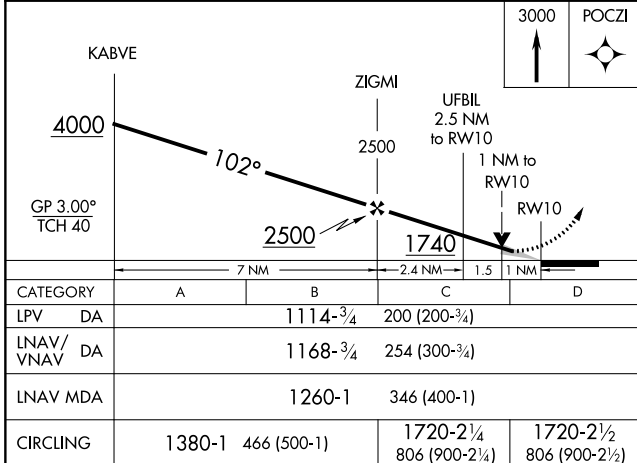
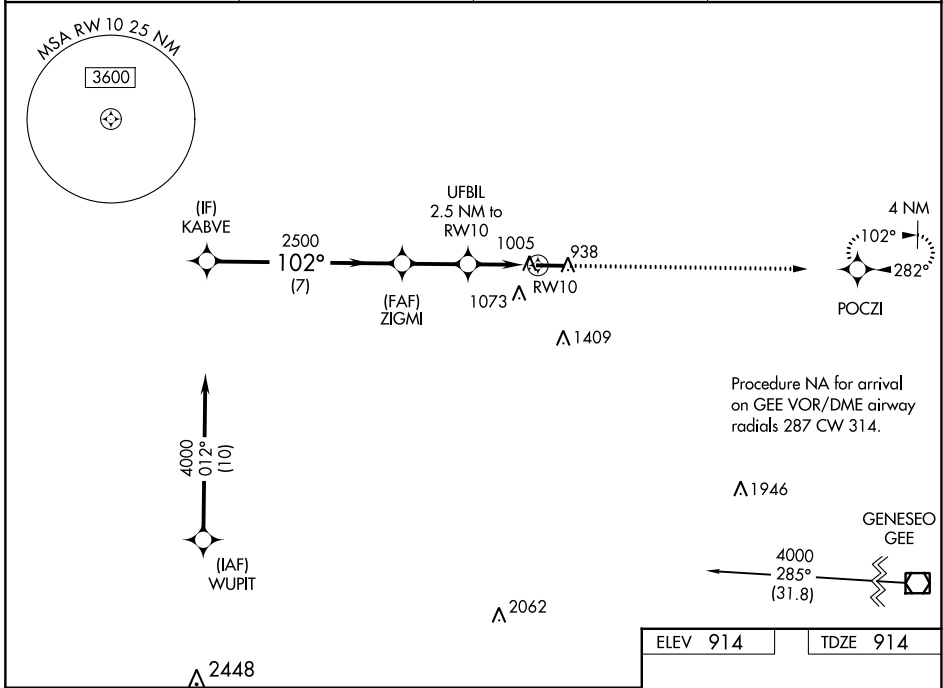
WAAS CH <b>82421</b> <b>W10A</b>	APP CRS <b>102°</b>	Rwy Idg TDZE Apt Elev	<b>5499</b> <b>914</b> <b>914</b>
--	------------------------	-----------------------------	---

# RNAV (GPS) RWY 10

GENESEE COUNTY (GVQ)

RNP APCH - GPS.			MISSED APPROACH: Climb to 3000 direct POCZI and hold.
For uncompensated Baro-VNAV systems, LNAV/VNAV NA below -16°C or above 54°C.			

AWOS-3PT <b>127.525</b>	ROCHESTER APP CON <b>123.7 322.3</b>	CLNC DEL <b>121.8</b>	UNICOM <b>122.7</b> (CTAF) <b>0</b>
----------------------------	---	--------------------------	--



NE-2, 26 DEC 2024 to 23 JAN 2025

NE-2, 26 DEC 2024 to 23 JAN 2025