

WAAS CH <b>90308</b> <b>W34A</b>	APP CRS <b>341°</b>	Rwy ldg <b>4002</b> TDZE <b>168</b> Apt Elev <b>168</b>
--	------------------------	---

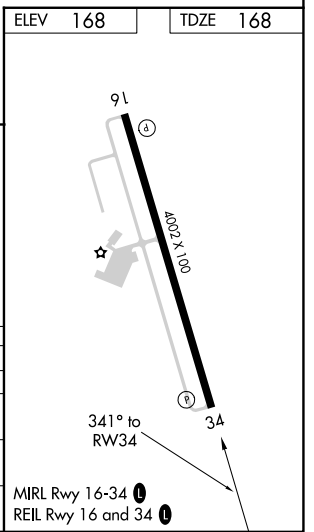
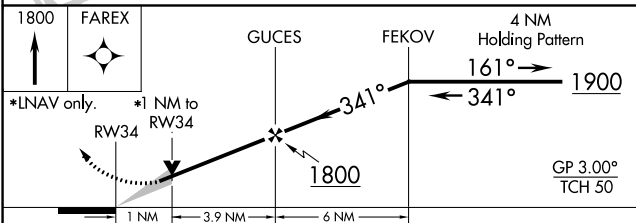
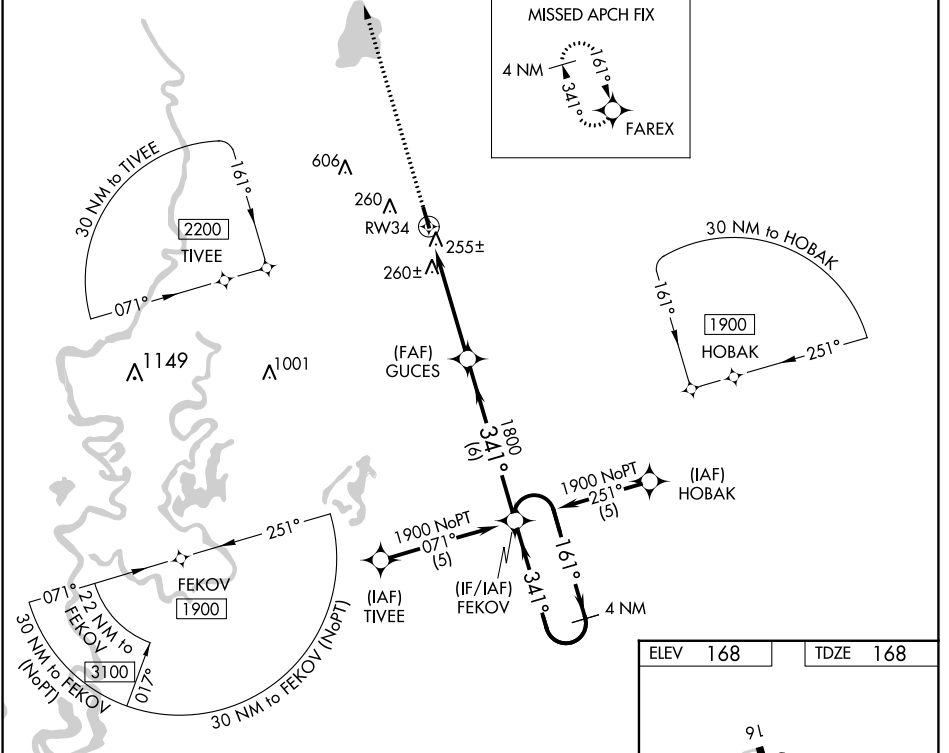
# RNAV (GPS) RWY 34

MOREHOUSE MEML (BQP)

**⚠** Baro-VNAV NA when using Monroe altimeter setting. For uncompensated Baro-VNAV systems, LNAV/VNAV NA below -15°C (5°F) or above 54°C (130°F). DME/DME RNP-0.3 NA. VDP NA when using Monroe altimeter setting. When local altimeter setting not received, use Monroe altimeter setting and increase LPV DA to 559', LNAV/VNAV DA to 602 and all MDA 60 feet; increase LNAV Cat C visibility 1/8 SM and Circling Cat C visibility 1/4 SM.

**MISSED APPROACH:**  
Climb to 1800 direct  
FAREX and hold.

AWOS-3PT <b>118.375</b>	MONROE APP CON ★ <b>126.9 307.9</b>	UNICOM <b>122.8 (CTAF) 0</b>
----------------------------	--	---------------------------------



CATEGORY	A	B	C	D
LPV DA	508-1¼	340 (400-1¼)		NA
LNAV/VNAV DA	551-1¼	383 (400-1¼)		NA
LNAV MDA	520-1	352 (400-1)		NA
CIRCLING	560-1 392 (400-1)	780-1 612 (700-1)	820-1¼ 652 (700-1¼)	NA

SC-4, 26 DEC 2024 to 23 JAN 2025

SC-4, 26 DEC 2024 to 23 JAN 2025