

VORTAC MLU 117.2 Chan 119	APP CRS 026°	Rwy Idg TDZE Apt Elev N/A N/A 168
---	------------------------	---

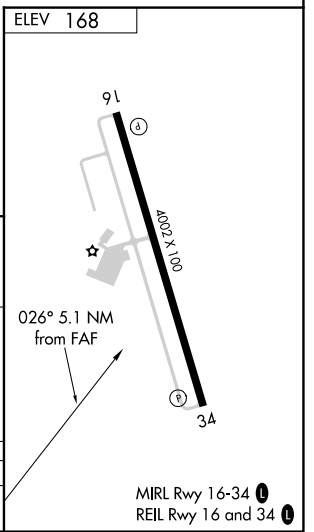
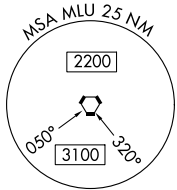
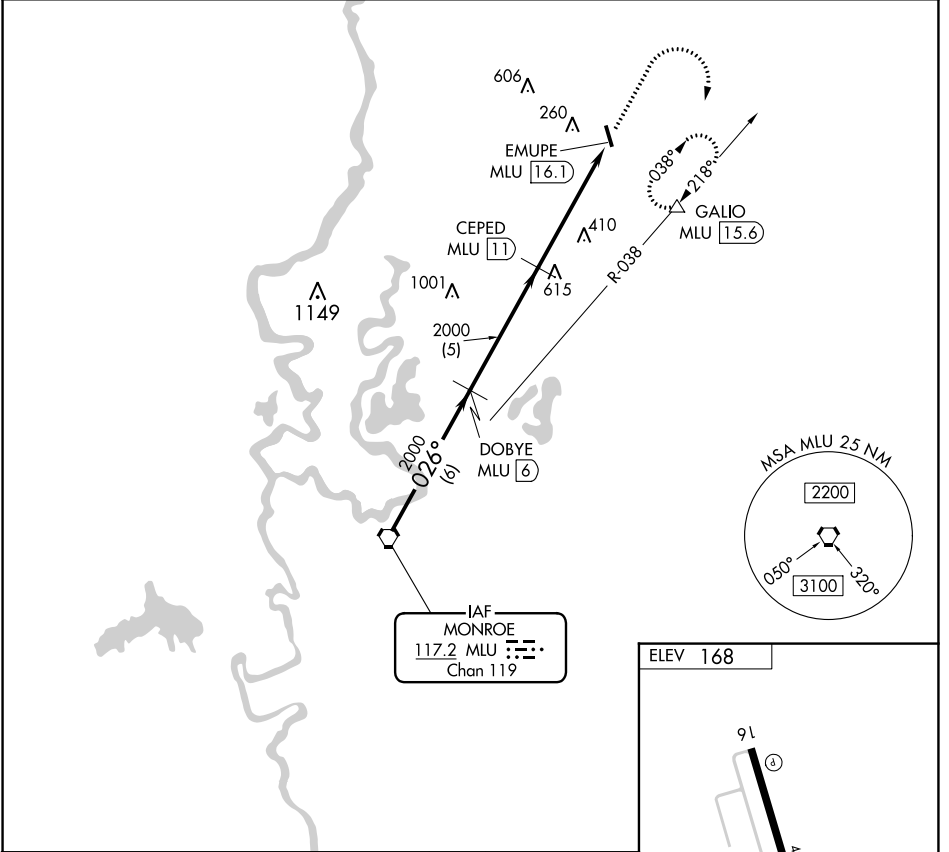
VOR/DME-A

MOREHOUSE MEML (BQP)

NA When local altimeter setting not received, use Monroe altimeter setting and increase all MDA 60 feet and Cat C visibility 1/4 mile.

MISSED APPROACH: Climb to 2000 then climbing right turn to 3000 via MLU R-038 to GALIO/MLU 15.6 and hold.

AWOS-3PT 118.375	MONROE APP CON* 126.9 307.9	UNICOM 122.8 (CTAF)
----------------------------	---------------------------------------	-------------------------------



	MLU VORTAC	DOBYE MLU [6]	CEPED MLU [11]	2000	3000	GALIO
Procedure Turn NA	2000	2000	2000	EMUPE MLU [16.1]	MLU R-038	△
	6 NM	5 NM	5.1 NM			
CATEGORY	A	B	C	D		
CIRCLING	720-1 552 (600-1)	780-1 612 (700-1)	820-1 1/4 652 (700-1 1/4)	NA		

MIRL Rwy 16-34
REIL Rwy 16 and 34

SC-4, 26 DEC 2024 to 23 JAN 2025

SC-4, 26 DEC 2024 to 23 JAN 2025