

WAAS CH <b>69546</b> <b>W32A</b>	APP CRS <b>314°</b>	Rwy Idg TDZE <b>1446</b> Apt Elev <b>1446</b>	<b>3604</b> <b>1446</b> <b>1446</b>
--	------------------------	---	---

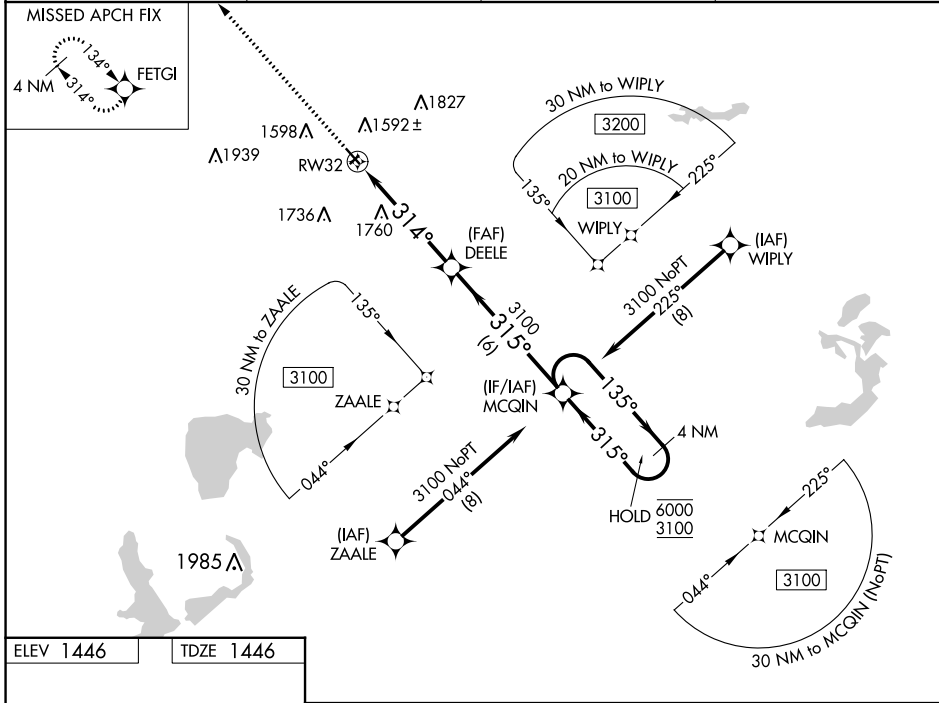
# RNAV (GPS) RWY 32

JACKSON MUNI (MJQ)

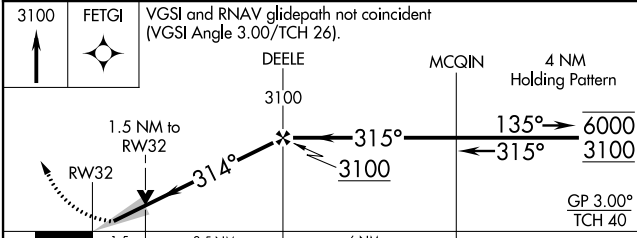
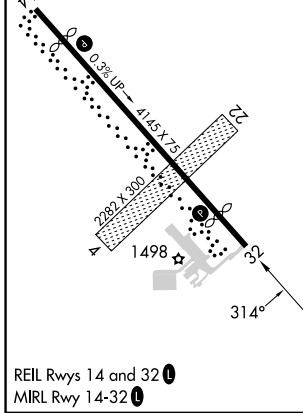
RNP APCH - GPS. MISSED APPROACH: Climb to 3100 direct FETGI and hold.

▼ For uncompensated Baro-VNAV systems, LNAV/VNAV NA  
 ▲ below -17°C or above 54°C. Circling NA to Rwy's 4 and 22.

AWOS-3 <b>118.1</b>	MINNEAPOLIS CENTER <b>127.75 257.7</b>	GCO <b>121.725</b>	UNICOM <b>122.8</b> (CTAF) <b>0</b>
------------------------	---	-----------------------	--



ELEV 1446	TDZE 1446
-----------	-----------



CATEGORY	A	B	C	D
LPV DA	1696-1	250 (300-1)		NA
LNAV/VNAV DA	1960-1 $\frac{3}{8}$	514 (600-1 $\frac{3}{8}$ )		NA
LNAV MDA	1960-1	514 (600-1)		NA
<b>C</b> CIRCLING	2040-1	594 (600-1)		NA

NC-1, 26 DEC 2024 to 23 JAN 2025

NC-1, 26 DEC 2024 to 23 JAN 2025