

HI-ILS Z or LOC Z RWY 8

LOC I-JAX 110.7	APCH CRS 077°	Rwy Ildg 10,000 TDZE 30 Arpt Elev 30
---------------------------	-------------------------	---

[USAF]

JACKSONVILLE INTL (KJAX)

DME required. RADAR required for procedure entry.

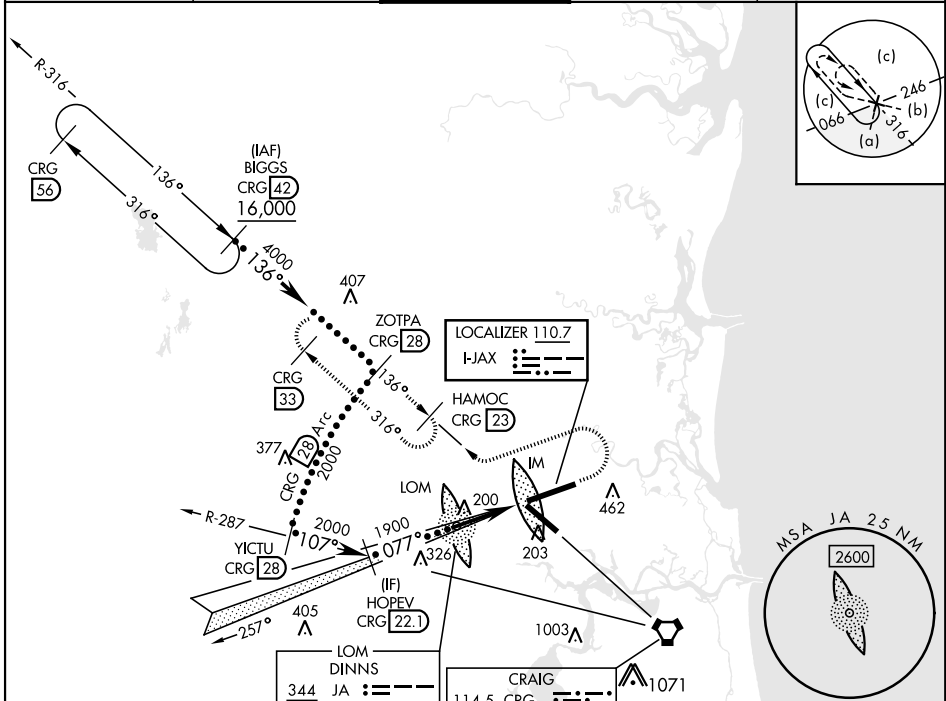
- ▼ * When ALS inop, increase CAT E RVR to 40, vis to ¾ mile.
- ▲ ** When ALS inop, increase CAT E vis to 1¾ miles.

ALSF-2



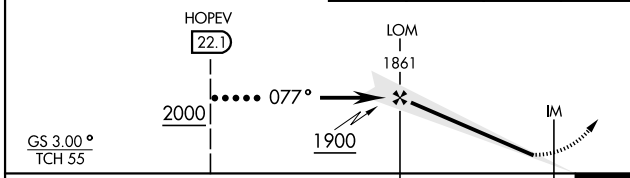
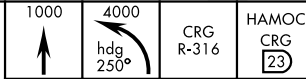
MISSED APPROACH: Climb to 1000 then climbing left turn to 4000 on heading 250° and on CRG R-316 to HAMOC/CRG 23 DME and hold, continue climb-in-hold to 4000.

ATIS 125.85	APP CON 119.0 269.9	TOWER 118.3 317.7	GND CON 121.9 348.6	CLNC DEL 119.5 290.275
-----------------------	-------------------------------	-----------------------------	-------------------------------	----------------------------------

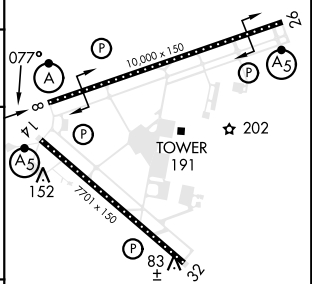


EMERG SAFE ALT 100 NM 2600

VGSI and ILS glidepath not coincident (VGSI Angle 3.00/TCH 70).



ELEV 30	TDZE 30
---------	---------



REIL Rwy 32
HIRL Rwy 8-26, 14-32
TDZL/CL Rwy 8-26, 14

FAF to MAP 5.6 NM					
Knots	120	140	160	180	200
Min:Sec	2:48	2:24	2:06	1:52	1:41

HI-ILS Z or LOC Z RWY 8

SE-3, 26 DEC 2024 to 23 JAN 2025

SE-3, 26 DEC 2024 to 23 JAN 2025