

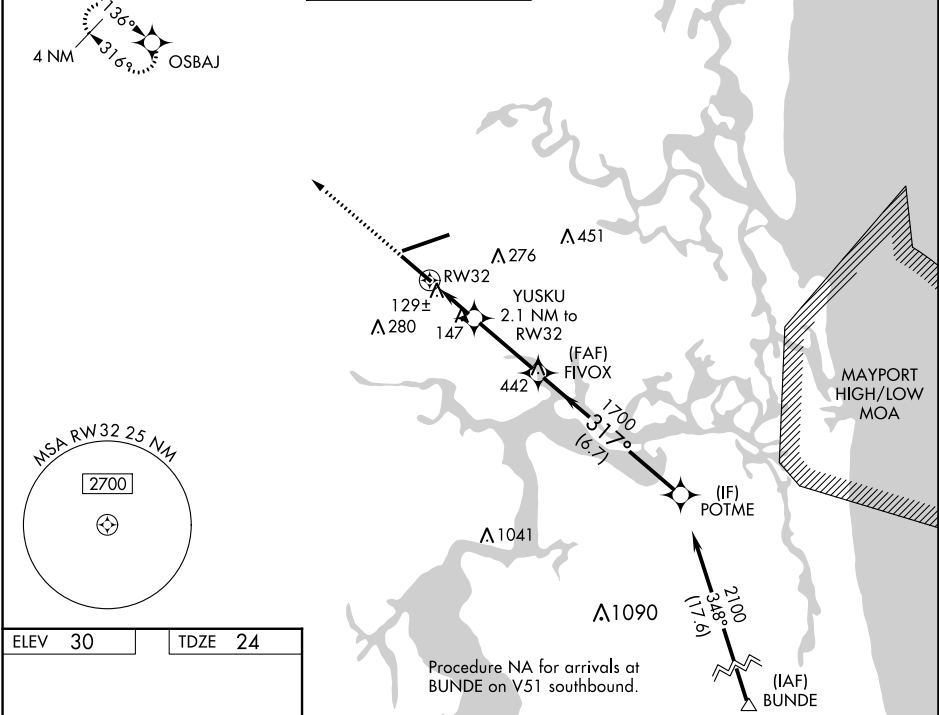
WAAS CH <b>40199</b> <b>W32A</b>	APP CRS <b>317°</b>	Rwy Idg TDZE Apt Elev	<b>7701</b> <b>24</b> <b>30</b>
--	------------------------	-----------------------------	---------------------------------------

# RNAV (GPS) Z RWY 32

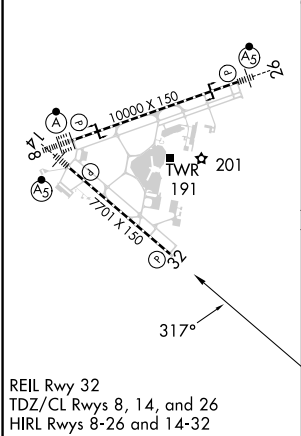
JACKSONVILLE INTL (JAX)

RNP APCH-GPS	<p>▼ For uncompensated Baro-VNAV systems, LNAV/VNAV NA below -5°C or above 54°C. Rwy 32 helicopter visibility reduction below ¾ SM NA.</p>	MISSED APPROACH: Climb to 2000 direct OSBAJ and hold.
--------------	--	---

D-ATIS <b>125.85</b>	JACKSONVILLE APP CON <b>119.0 269.9</b>	JACKSONVILLE TOWER <b>118.3 317.7</b>	GND CON <b>121.9 348.6</b>	CLNC DEL <b>119.5 290.275</b>	CPDLC
-------------------------	--	--	-------------------------------	----------------------------------	-------



ELEV 30	TDZE 24
---------	---------



2000	OSBAJ	VGSI and RNAV glidepath not coincident (VGSI Angle 3.00/TCH 67).	POTME
		YUSKU 2.1 NM to RW32	FIVOX 1700
		1 NM to RW32	2100
		RW32	740
		1 NM	1.1 NM
		3 NM	6.7 NM
			GP 3.00° TCH 50

CATEGORY	A	B	C	D
LPV DA		336-1	312 (400-1)	
LNAV/VNAV DA		387-1¼	363 (400-1¼)	
LNAV MDA		400-1	376 (400-1)	
CIRCLING	520-1	490 (500-1)	580-1½ 550 (600-1½)	580-2 550 (600-2)

SE-3, 26 DEC 2024 to 23 JAN 2025

SE-3, 26 DEC 2024 to 23 JAN 2025