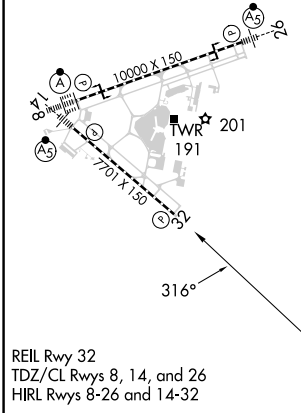
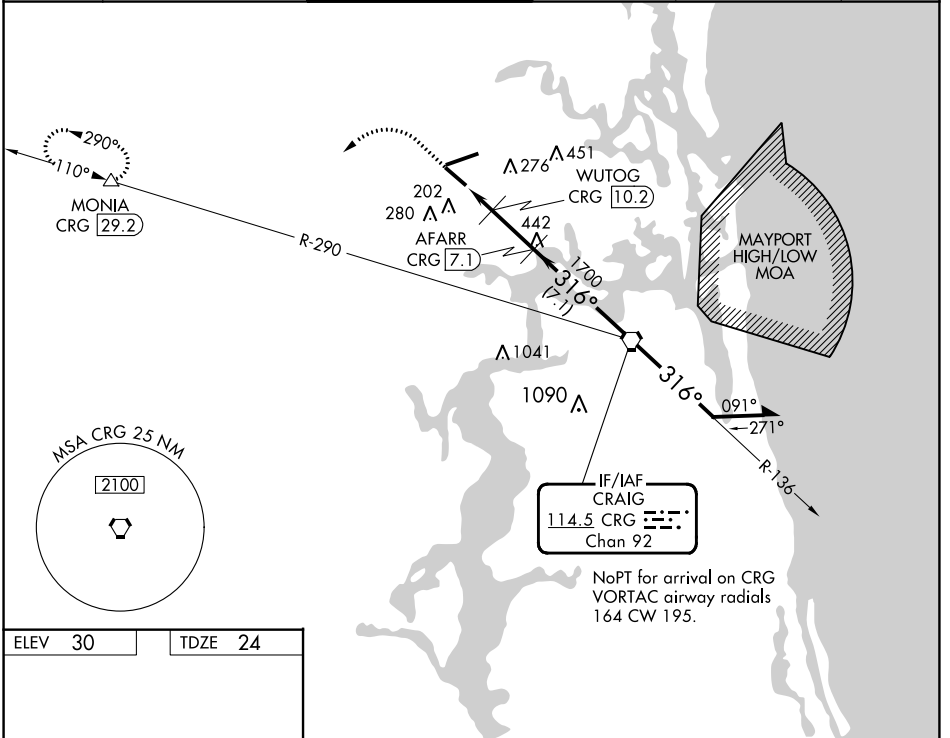


VORTAC CRG <b>114.5</b> Chan <b>92</b>	APP CRS <b>316°</b>	Rwy Idg TDZE <b>24</b> Apt Elev <b>30</b>	<b>7701</b>
--	------------------------	---	-------------

# VOR/DME RWY 32

JACKSONVILLE INTL (JAX)

<p><b>▼</b> Rwy 32 helicopter visibility reduction by below 3/4 SM NA. <b>▲</b> Cat E procedure turn NA.</p>		<p>MISSED APPROACH: Climb to 1000 then climbing left turn to 3000 on heading 250° and on CRG VORTAC R-290 to MONIA/CRG 29.2 DME and hold.</p>			
D-ATIS <b>125.85</b>	JACKSONVILLE APP CON <b>119.0 269.9</b>	JACKSONVILLE TOWER <b>118.3 317.7</b>	GND CON <b>121.9 348.6</b>	CLNC DEL <b>119.5 290.275</b>	CPDLC



ELEV 30	TDZE 24	1000	3000	CRG R-290	MONIA	VGSI and ILS glidepath not coincident (VGSI Angle 3.05/TCH 68).
		↑	hdg 250°	△	△	
		<p>CRG 12.2 (11.1) 3.00° TCH 50</p>		<p>AFARR CRG 7.1</p>	<p>WUTOG CRG 10.2</p>	<p>CRG VORTAC 6000</p>
		<p>720 1700</p>		<p>136° 2100</p>		<p>Remain within 10 NM</p>
		<p>1.1 0.9 3.1 NM 7.1 NM</p>				
CATEGORY	A	B	C	D	E	
S-32	460-1	436 (500-1)	460-1 1/4	436 (500-1 1/4)		
CIRCLING	520-1	490 (500-1)	580-1 1/2 550 (600-1 1/2)	580-2 550 (600-2)	760-2 1/2 730 (800-2 1/2)	

SE-3, 26 DEC 2024 to 23 JAN 2025

SE-3, 26 DEC 2024 to 23 JAN 2025