

LOC/DME	I-OTI	APP CRS	Rwy Idg	2999
108.5	219°	219°	TDZE	172
Chan 22			Apt Elev	172

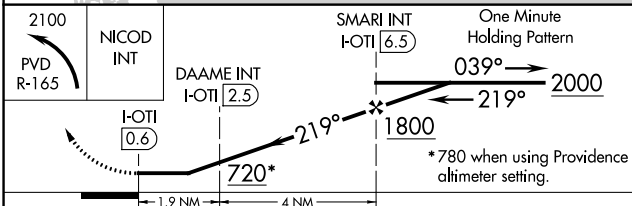
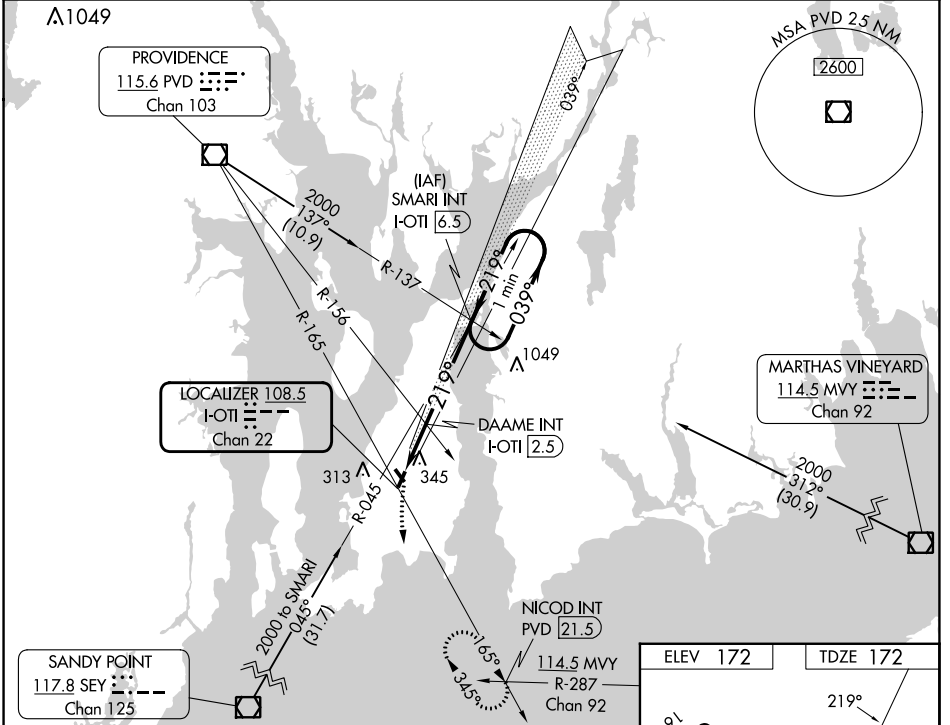
LOC RWY 22

NEWPORT STATE (UUU)

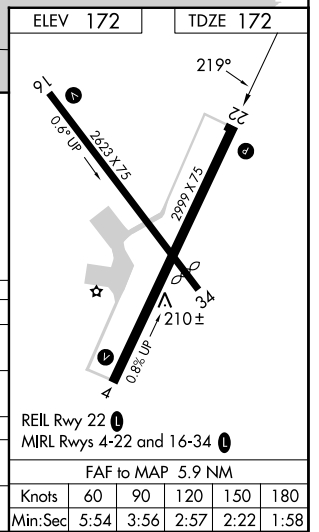
NA When local altimeter setting not received, use Providence altimeter setting and increase all MDA 60 feet. Straight-in Rwy 22 NA at night, Circling Rwy 4, 22, 34 NA at night.

MISSED APPROACH: Climbing left turn to 2100 via PVD VOR/DME R-165 to NICOD INT/21.5 DME and hold.

ASOS	PROVIDENCE APP CON*	CLNC DEL	UNICOM
132.075	128.7 269.525	127.25	123.05 (CTAF) 0



CATEGORY	A	B	C	D
S-22	720-1	548 (600-1)	720-1 ⁵ / ₈ 548 (600-1 ⁵ / ₈)	NA
CIRCLING	760-1	588 (600-1)	780-1 ³ / ₄ 608 (700-1 ³ / ₄)	NA
DAAME FIX MINIMUMS (DUAL VOR RECEIVERS OR DME REQUIRED)				
S-22	640-1	468 (500-1)	640-1 ¹ / ₄ 468 (500-1 ¹ / ₄)	NA
CIRCLING	760-1	588 (600-1)	780-1 ³ / ₄ 608 (700-1 ³ / ₄)	NA



NE-1, 26 DEC 2024 to 23 JAN 2025

NE-1, 26 DEC 2024 to 23 JAN 2025