

(LINSE1.LINSE) 24193

AL-5596 (FAA)

EASTON/NEWNAM FLD (ESN)

LINSE ONE DEPARTURE (RNAV)

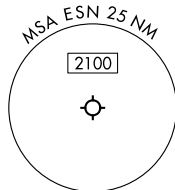
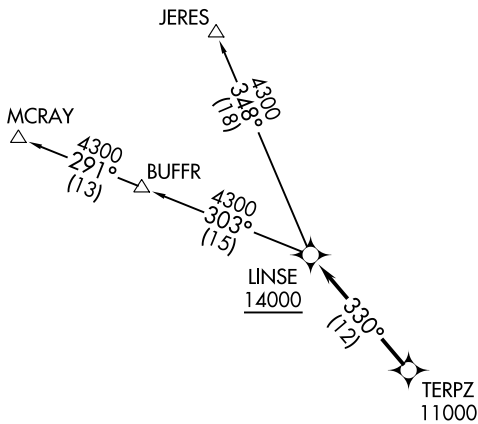
EASTON, MARYLAND

POTOMAC DEP CON
 133.75 254.35
 ATIS
 124.475
 CLNC DEL
 119.075
 GND CON
 119.075
 EASTON TOWER ★
 118.525

RNAV 1 - DME/DME/IRU or GPS.

RADAR required.

**TOP ALTITUDE:
16000**



NOTE: Jet aircraft only.

TAKEOFF MINIMUMS:

Rwys 4, 15, 33: Standard.
 Rwy 22: 300-2 or Standard with minimum climb
 of 210'/NM to 400.



NOTE: Chart not to scale.



DEPARTURE ROUTE DESCRIPTION

Climb on assigned heading for RADAR vectors to cross TERPZ at or above 11000, thence....

....then on track 330° to cross LINSE at or above 14000. Then on assigned transition. Maintain 16000, expect filed altitude 10 minutes after departure.

JERES TRANSITION (LINSE1.JERES)

MCRAY TRANSITION (LINSE1.MCRAY)

LINSE ONE DEPARTURE (RNAV)

(LINSE1.LINSE) 11 JUL24

EASTON, MARYLAND
EASTON/NEWNAM FLD (ESN)

NE-3, 26 DEC 2024 to 23 JAN 2025

NE-3, 26 DEC 2024 to 23 JAN 2025