

MELFA, VIRGINIA

AL-5598 (FAA)

24361

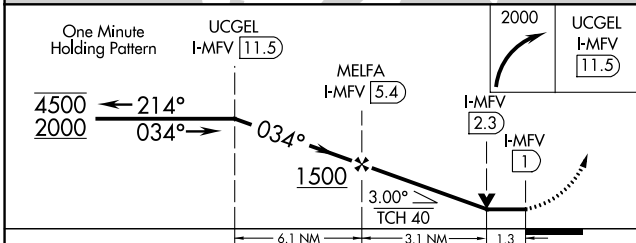
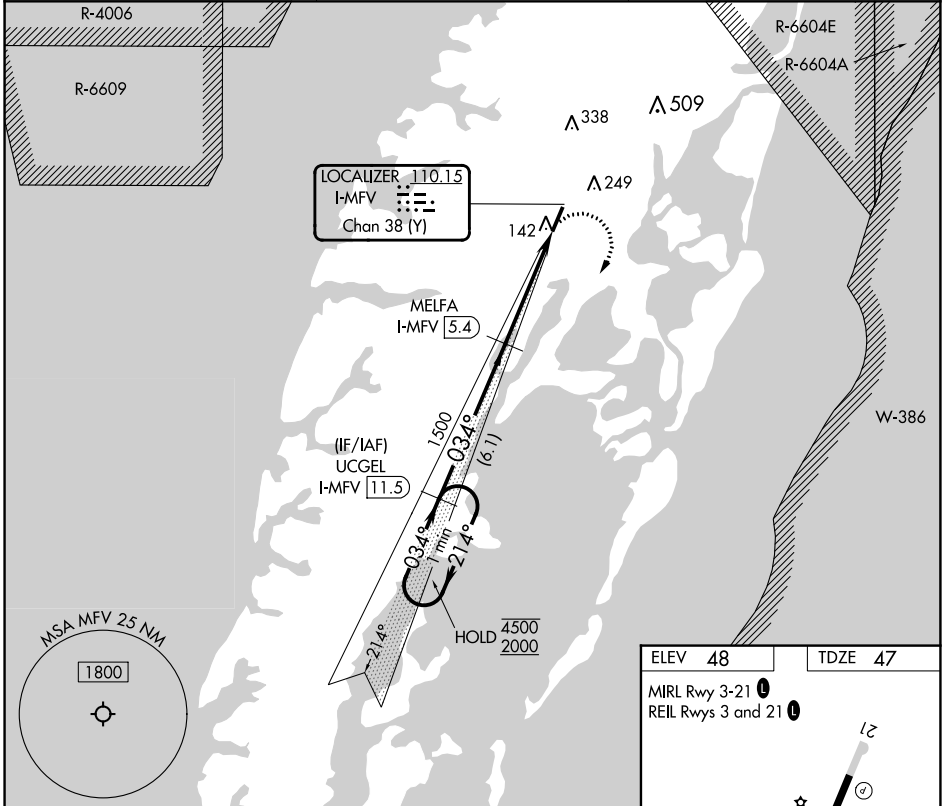
LOC/DME I-MFV 110.15 Chan 38 (Y)	APP CRS 034°	Rwy ldg TDZE Apt Elev	5000 47 48
--	------------------------	-----------------------------	---------------------------------------

LOC RWY 3

ACCOMACK COUNTY (MFV)

RNP APCH - GPS.	MISSED APPROACH: Climbing right turn to 2000 direct UCGEL and hold.
Rwy 3 helicopter visibility reduction below 3/4 SM NA.	

AWOS-3 118.175	PATUXENT APP CON * 127.95 314.0	UNICOM 122.8 (CTAF)
--------------------------	---	-------------------------------



ELEV 48	TDZE 47
MIRL Rwy 3-21	REIL Rwys 3 and 21
FAF to MAP 4.4 NM	
Knots	60 90 120 150 180
Min:Sec	4:24 2:56 2:12 1:46 1:28

CATEGORY	A	B	C	D
S-3	500-1	453 (500-1)	500-1 3/4	453 (500-1 3/4)
CIRCLING	500-1 452 (500-1)	560-1 512 (600-1)	700-1 3/4 652 (700-1 3/4)	700-2 652 (700-2)

MELFA, VIRGINIA
Amdt 2 26DEC24

37°39'N-75°46'W

LOC RWY 3

NE-3, 26 DEC 2024 to 23 JAN 2025

NE-3, 26 DEC 2024 to 23 JAN 2025