

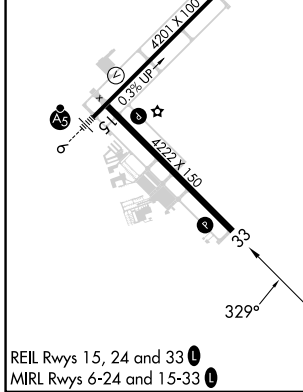
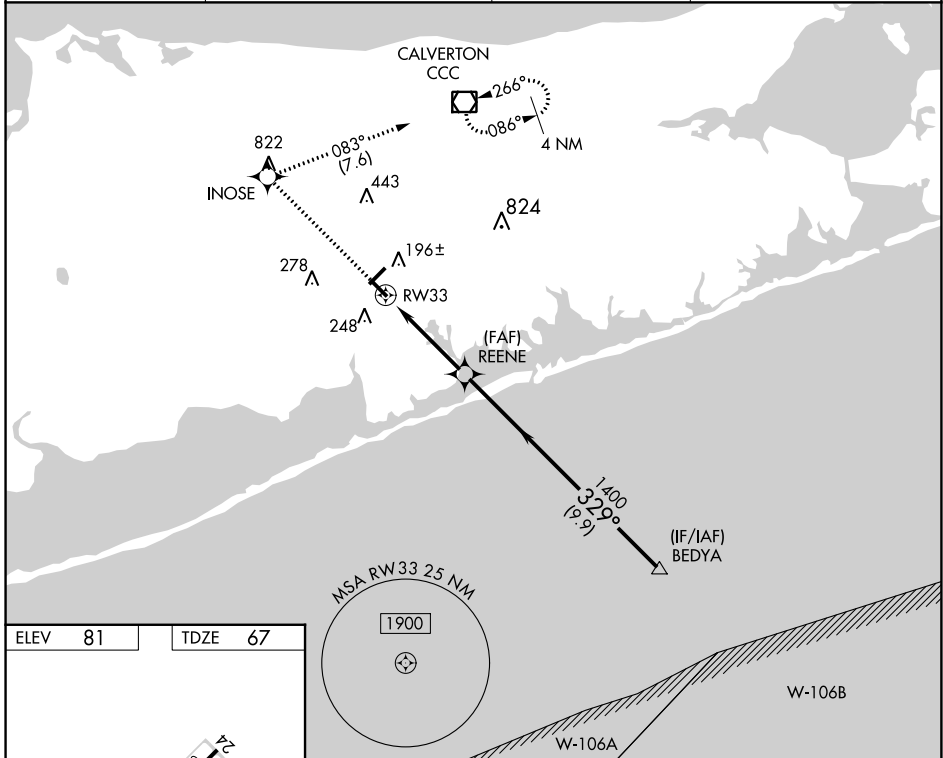
WAAS CH 40412 W33A	APP CRS 329°	Rwy Idg 4222 TDZE 67 Apt Elev 81
--	------------------------	---

RNAV (GPS) RWY 33

BROOKHAVEN (HWV)

RNP APCH - GPS.			MISSED APPROACH: Climb to 2000 direct INOSE and right turn on track 083° to CCC VOR/DME and hold.
For uncompensated Baro-VNAV systems, LNAV/VNAV NA below -15°C or above 54°C. Circling Rwy 6, 15 NA at night. Rwy 33 helicopter visibility reduction below ¾ SM NA.			

ASOS 119.625	NEW YORK APP CON 120.05 343.75	CLNC DEL 133.2	UNICOM 122.8 (CTAF) 0
------------------------	--	--------------------------	---------------------------------



2000	INOSE	CCC	BEDYA
↑	✱	tr 083°	✱
1.2 NM to RW33 RW33		REENE 1400	BEDYA 4000
1.2 NM 2.8 NM 9.9 NM		1400	GP 3.00° TCH 46
CATEGORY	A	B	C
LPV DA	346-1	279 (300-1)	NA
LNAV/VNAV DA	449-1½	382 (400-1½)	NA
LNAV MDA	500-1	433 (500-1)	NA
CIRCLING	560-1	479 (500-1)	NA

NE-2, 26 DEC 2024 to 23 JAN 2025

NE-2, 26 DEC 2024 to 23 JAN 2025