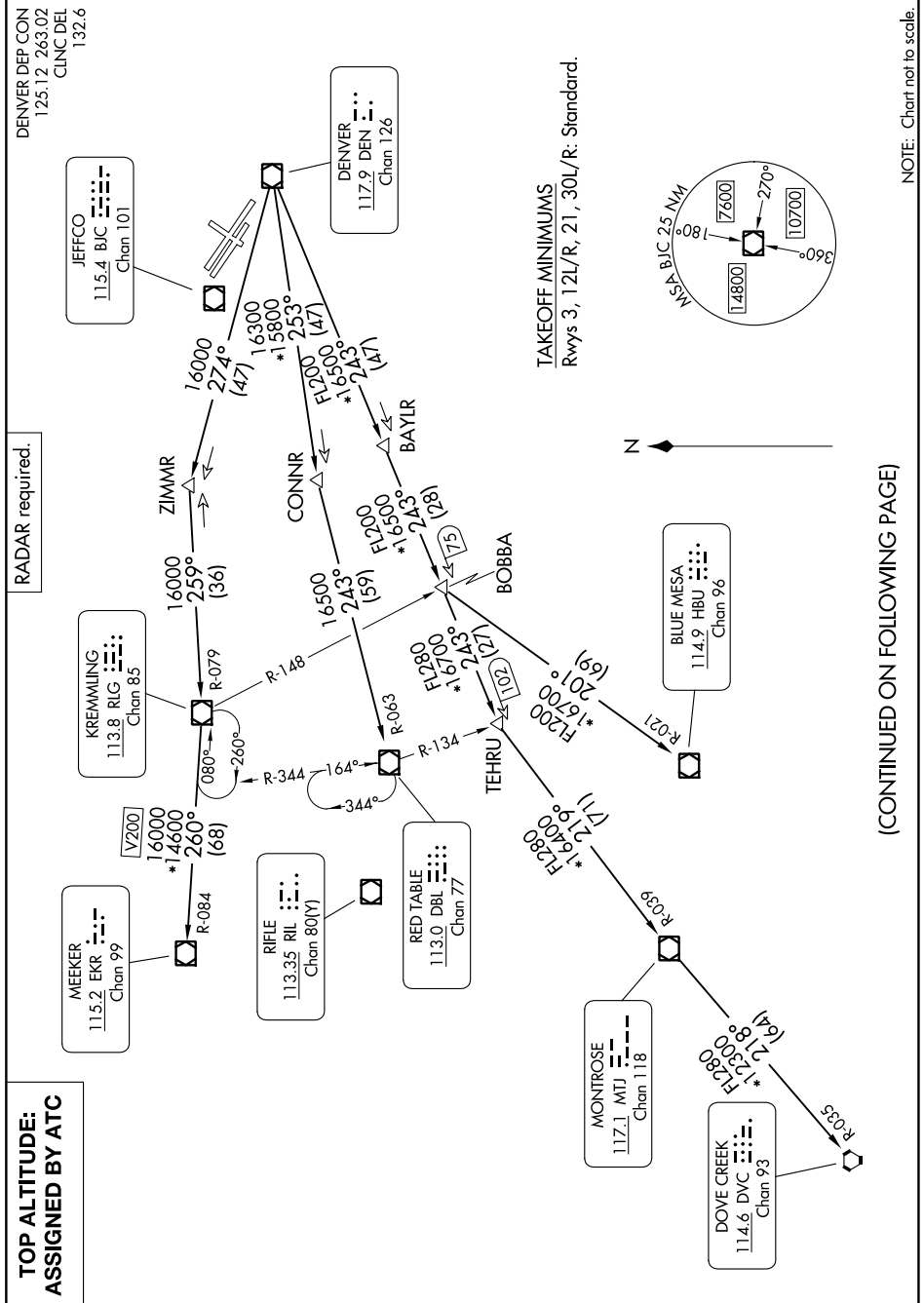


ROCKIES SIX DEPARTURE

AL-5612 (FAA)

SW-1, 26 DEC 2024 to 23 JAN 2025



**TOP ALTITUDE:
ASSIGNED BY ATC**

RADAR required.

DENVER DEP CON
125.12 263.02
CLNC DEL
132.6

JEFFCO
115.4 BJC
Chan 101

KREMLING
113.8 RIG
Chan 85

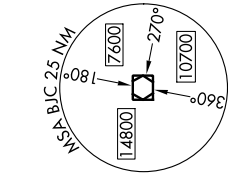
MEERER
115.2 EKR
Chan 99

RIFLE
113.35 RIL
Chan 80(Y)

RED TABLE
113.0 DBL
Chan 77

DENVER
117.9 DEN
Chan 126

TAKEOFF MINIMUMS
Rwys 3, 12L/R, 21, 30L/R, Standard.



(CONTINUED ON FOLLOWING PAGE)

NOTE: Chart not to scale.

ROCKIES SIX DEPARTURE

SW-1, 26 DEC 2024 to 23 JAN 2025