

|             |          |             |
|-------------|----------|-------------|
| APP CRS     | Rwy Idg  | <b>5001</b> |
| <b>095°</b> | TDZE     | <b>684</b>  |
|             | Apt Elev | <b>684</b>  |

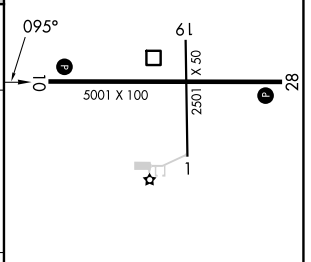
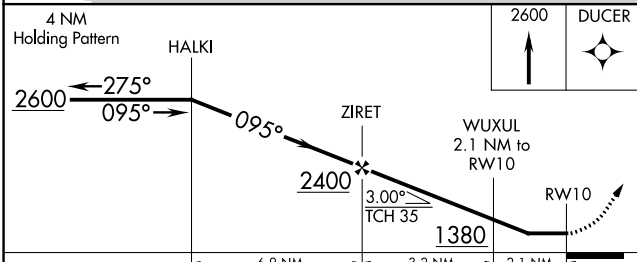
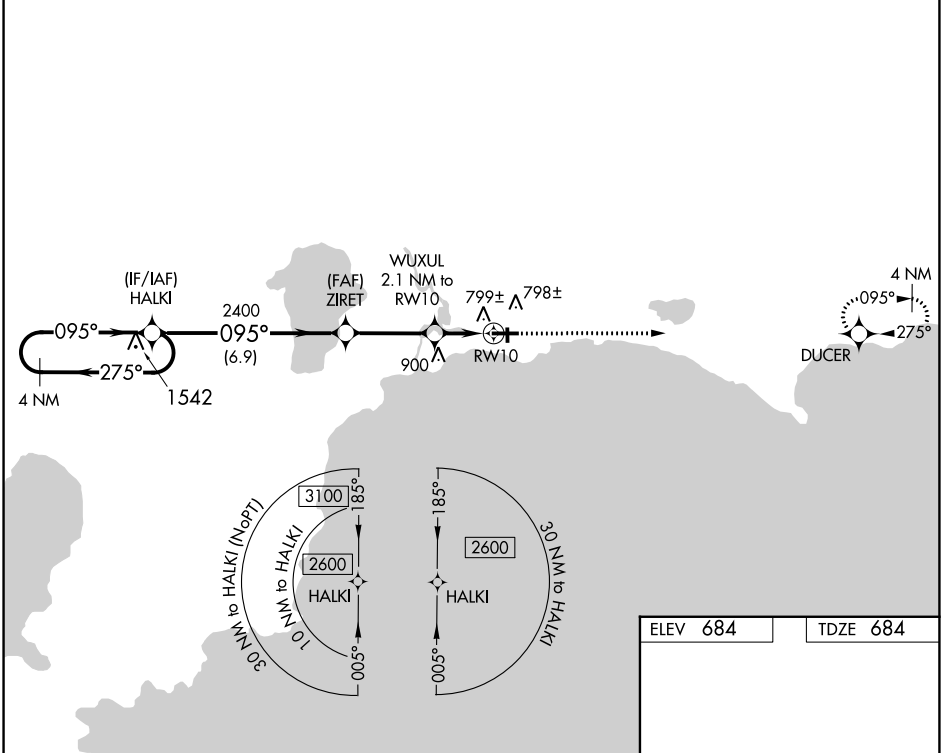
# RNAV (GPS) RWY 10

SCHOOLCRAFT COUNTY (ISQ)

**⚠** DME/DME RNP-0.3 NA. Helicopter visibility reduction below 1 SM NA. When local altimeter setting not received, use Beaver Island altimeter setting and increase all MDA 80 feet, increase LNAV Cat C and D visibility  $\frac{3}{8}$  SM, Circling Cat C visibility  $\frac{1}{2}$  SM and Circling Cat D visibility  $\frac{1}{4}$  SM. When VGSI inop, Straight-In/Circling Rwy 10 procedure NA at night. Night landing: Rwy 1, 19 NA.

**⚠** MISSED APPROACH: Climb to 2600 direct DUCER and hold.

|                          |  |                                 |
|--------------------------|--|---------------------------------|
| AWOS-3<br><b>118.775</b> | MINNEAPOLIS APP CON<br><b>134.6 354.05</b> | UNICOM<br><b>122.8 (CTAF) ①</b> |
|--------------------------|--|---------------------------------|



|          |                       |                       |                         |                       |
|----------|-----------------------|-----------------------|-------------------------|-----------------------|
| CATEGORY | A                     | B                     | C                       | D                     |
| LNAV MDA | 1060-1 376 (400-1)    |                       |                         |                       |
| CIRCLING | 1120-1<br>436 (500-1) | 1140-1<br>456 (500-1) | 1280-1½<br>596 (600-1½) | 1300-2<br>616 (700-2) |

REIL Rwy 28 ①  
MIRL Rwy 10-28 ①

EC-1, 26 DEC 2024 to 23 JAN 2025

EC-1, 26 DEC 2024 to 23 JAN 2025