

WAAS CH <b>56399</b> <b>W36A</b>	APP CRS <b>001°</b>	Rwy Idg <b>4718</b> TDZE <b>330</b> Apt Elev <b>331</b>
--	------------------------	---

# RNAV (GPS) RWY 36

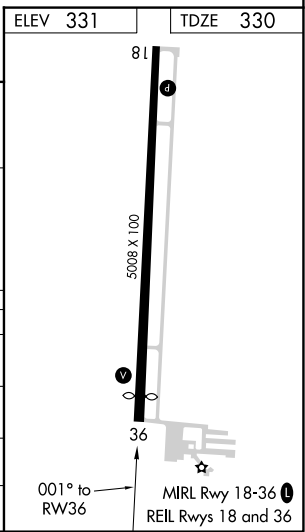
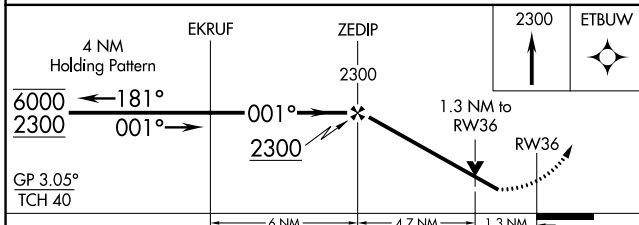
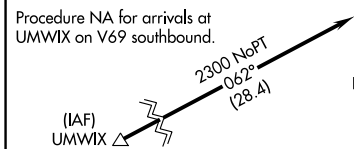
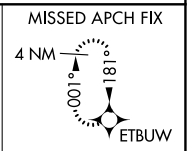
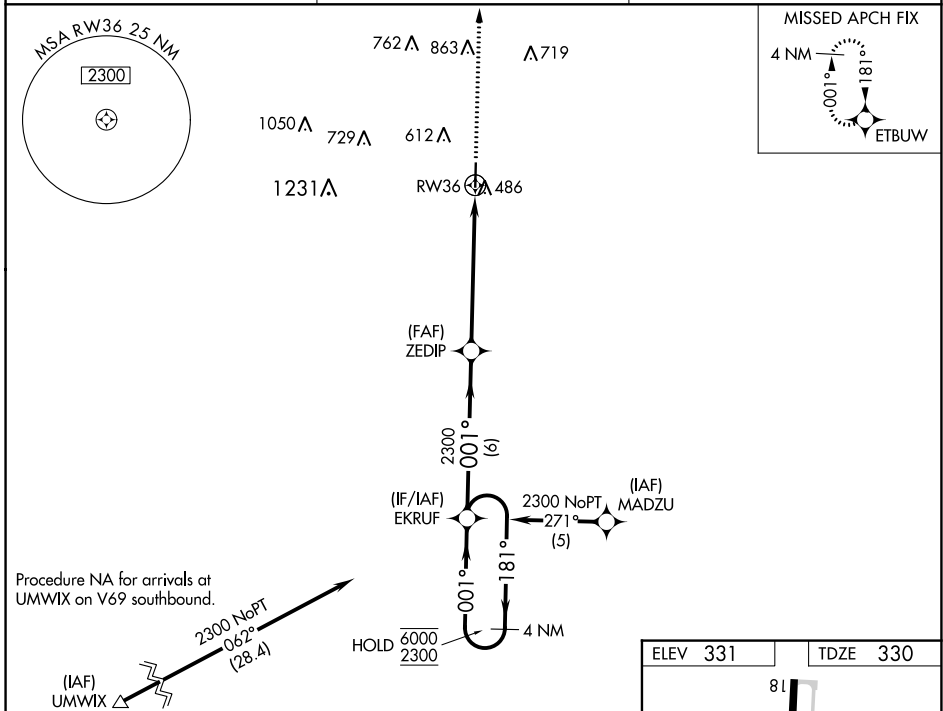
POPLAR BLUFF RGNL BUSINESS (POB)

RNP APCH-GPS.

▼ Rwy 36 helicopter visibility reduction below 3/4 SM NA.  
▲ For uncompensated Baro-VNAV systems, LNAV/VNAV NA below -23°C or above 54°C.

MISSED APPROACH: Climb to 2300 direct ETBUW and hold.

ASOS <b>124.225</b>	MEMPHIS CENTER <b>120.075 289.4</b>	UNICOM <b>123.0 (CTAF) 0</b>
------------------------	--	---------------------------------



CATEGORY	A	B	C	D
LPV DA		669-1	339 (400-1)	
LNAV/VNAV DA		773-1 3/8	443 (500-1 3/8)	
LNAV MDA	780-1	450 (500-1)	780-1 3/8	450 (500-1 3/8)
CIRCLING	840-1 509 (600-1)	920-1 589 (600-1)	920-1 1/2 589 (600-1 1/2)	980-2 649 (700-2)

NC-3, 26 DEC 2024 to 23 JAN 2025

NC-3, 26 DEC 2024 to 23 JAN 2025