

LOC I-MJX 109.9	APP CRS 063°	Rwy Idg TDZE Apt Elev	5835 81 86
---------------------------	------------------------	-----------------------------	---------------------------------------

ILS or LOC RWY 6

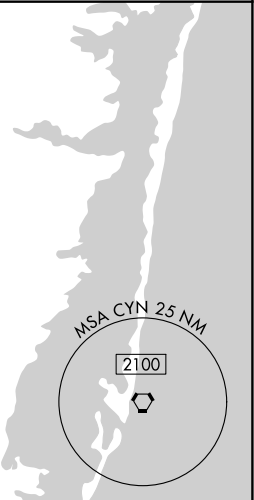
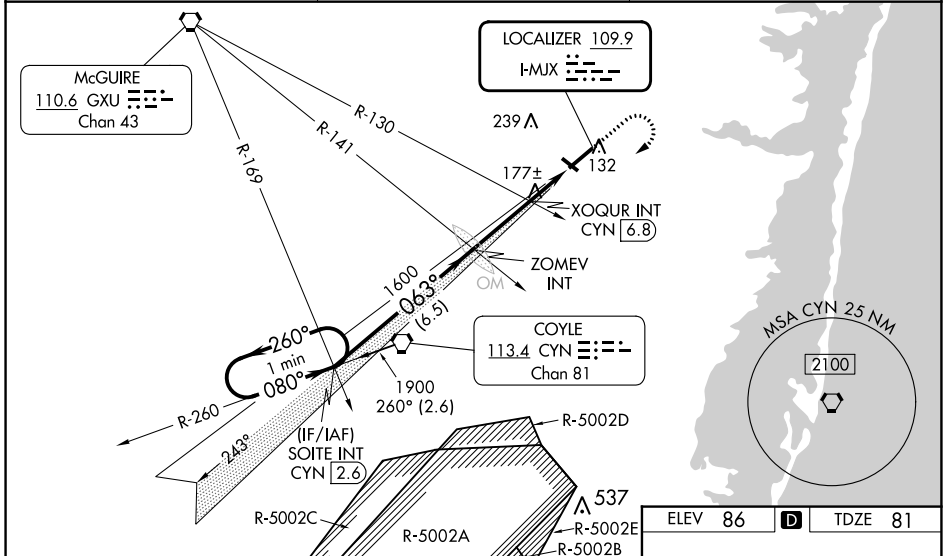
OCEAN COUNTY (MJX)

NA Circling Rwy 14, 32 NA at night. Inop table does not apply to S-ILS 6. For inop ALS, increase S-LOC 6 Cats A/B and S-LOC 6 XOQR Fix minimums Cats A/B visibility to 1. When local altimeter setting not received, use Mc Guire Fld (Joint Base Mc Guire Dix Lakehurst) altimeter setting and increase all DA 41 feet and all MDA 60 feet; increase S-LOC 6 Cats C/D and Circling Cat C visibility ½ mile, Cat D ¼ mile; increase XOQR Fix minimums S-LOC 6 Cat C/D visibility ½ mile and Circling Cat D ¼ mile. For inop ALS when using Mc Guire Fld (Joint Base Mc Guire Dix Lakehurst) altimeter setting, increase S-ILS 6 all Cats visibility to ¾ and S-LOC 6 Cats A/B and S-LOC 6 XOQR Fix minimums Cats A/B visibility to 1, Cats C/D visibility to 1 ½. Rwy 6 helicopter visibility reduction below ¾ SM NA.

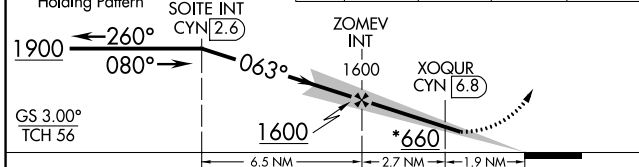
MISSED APPROACH:
Climb to 600 then climbing right turn to 1900 direct CYN VORTAC then on CYN R-260 to SOITE INT/CYN 2.6 DME and hold.



AWOS-3PT 119.875	MC GUIRE APP CON 126.475 363.8	UNICOM 122.7 (CTAF)
----------------------------	--	-------------------------------

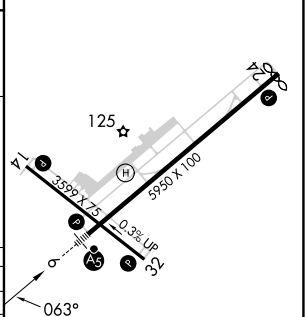


*720 when using Joint Base Mc Guire Dix Lakehurst altimeter setting.	600	1900	CYN	CYN R-260	SOITE INT
--	-----	------	-----	-----------	-----------



ELEV 86	TDZE 81
---------	---------

CATEGORY	A	B	C	D
S-ILS 6		331-¾	250 (300-¾)	
S-LOC 6	660-¾	579 (600-¾)	660-1¼	579 (600-1¼)
CIRCLING	660-1	574 (600-1)	574 (600-1¾)	614 (700-2)
XOQR FIX MINIMUMS (DUAL VOR RECEIVERS or DME REQUIRED)				
S-LOC 6	520-¾	439 (500-¾)	520-7/8	439 (500-7/8)
CIRCLING	540-1	560-1	580-1½	700-2
	454 (500-1)	474 (500-1)	494 (500-1½)	614 (700-2)



MIRL Rwy 14-32	HIRL Rwy 6-24	REIL Rws 14, 24 and 32			
FAF to MAP 4.6 NM					
Knots	60	90	120	150	180
Min:Sec	4:36	3:04	2:18	1:50	1:32

NE-2, 26 DEC 2024 to 23 JAN 2025

NE-2, 26 DEC 2024 to 23 JAN 2025