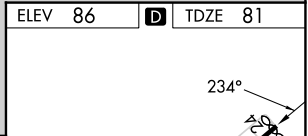
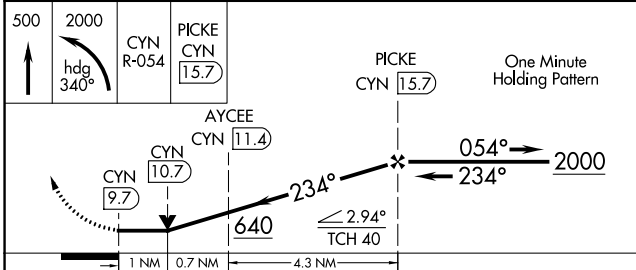
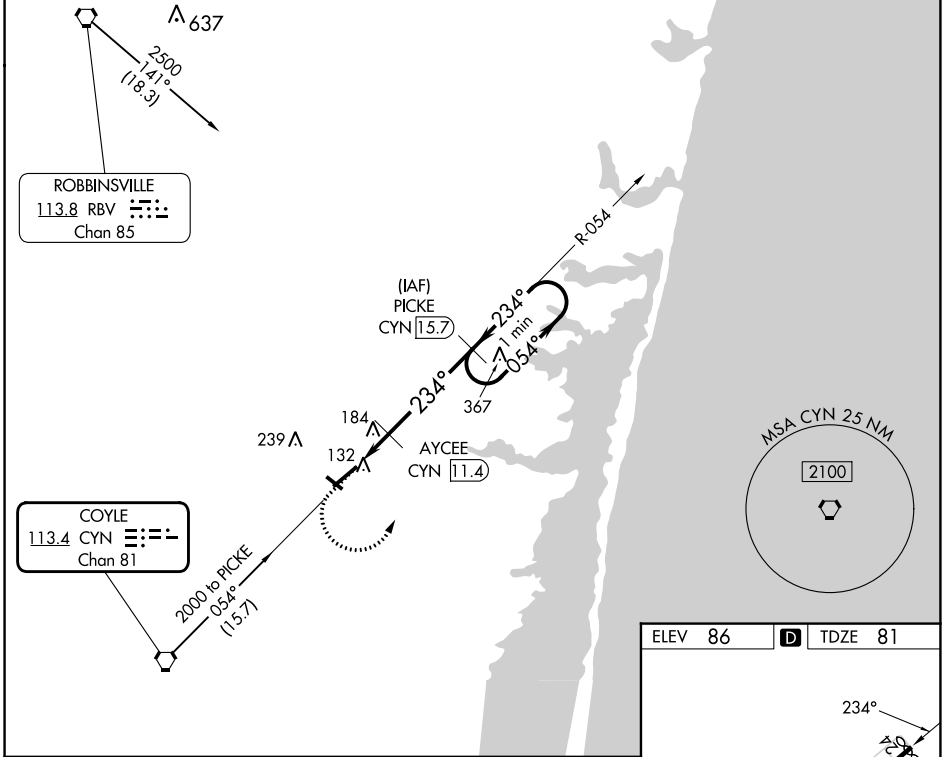


VORTAC CYN <b>113.4</b> Chan <b>81</b>	APP CRS <b>234°</b>	Rwy Idg TDZE <b>81</b> Apt Elev <b>86</b>	<b>5835</b>
--	------------------------	--	-------------

# VOR RWY 24

OCEAN COUNTY (MJX)

DME required for procedure entry. DME required.		MISSED APPROACH: Climb to 500 then climbing left turn to 2000 on heading 340° and on CYN VORTAC R-054 to PICKE/CYN 15.7 DME and hold.
Rwy 24 helicopter visibility reduction below 3/4 SM NA. Circling Rwy 14, 32 NA at night.		
AWOS-3PT <b>119.875</b>	MC GUIRE APP CON <b>126.475 363.8</b>	UNICOM <b>122.7 (CTAF) 0</b>



CATEGORY	A	B	C	D
S-24	440-1	359 (400-1)		
CIRCLING	540-1 454 (500-1)	560-1 474 (500-1)	580-1½ 494 (500-1½)	700-2 614 (700-2)

ELEV 86	TDZE 81
MIRL Rwy 14-32	
HIRL Rwy 6-24	
REIL Rws 14, 24 and 32	

NE-2, 26 DEC 2024 to 23 JAN 2025

NE-2, 26 DEC 2024 to 23 JAN 2025