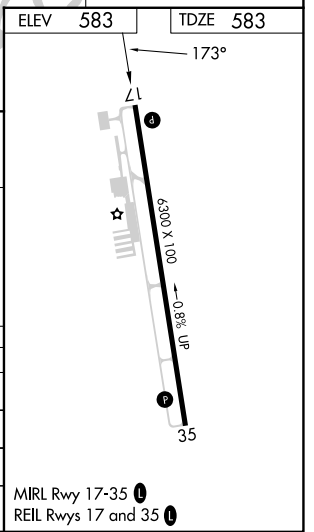
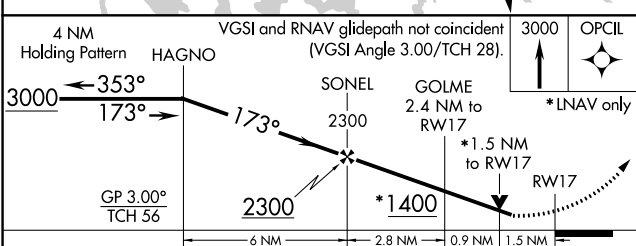
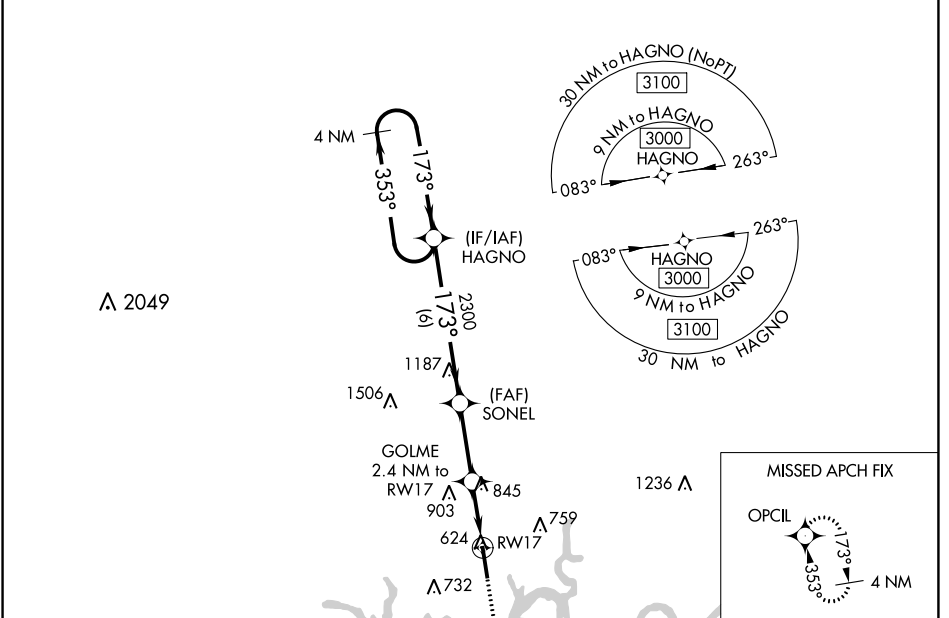


WAAS CH 70725 W17A	APP CRS 173°	Rwy Idg TDZE Apt Elev 6300 583 583
--	------------------------	--

RNAV (GPS) RWY 17

MUSIC CITY EXEC (XNX)

RNP APCH.		MISSED APPROACH: Climb to 3000 direct OPCIL and hold.	
AWOS-3 132.725	NASHVILLE APP CON 118.4 360.7	GCO 135.075	UNICOM 123.05 (CTAF) 0



CATEGORY	A	B	C	D
LPV DA		1069-1 $\frac{3}{8}$	486 (500-1 $\frac{3}{8}$)	
LNAV/VNAV DA		1075-1 $\frac{3}{8}$	492 (500-1 $\frac{3}{8}$)	
LNAV MDA	1100-1	517 (600-1)	1100-1 $\frac{3}{8}$	517 (600-1 $\frac{3}{8}$)
C CIRCLING	1100-1 517 (600-1)	1120-1 537 (600-1)	1240-1 $\frac{3}{4}$ 657 (700-1 $\frac{3}{4}$)	1280-2 $\frac{1}{4}$ 697 (700-2 $\frac{1}{4}$)

MIRL Rwy 17-35 **0**
REIL Rwy 17 and 35 **0**

SE-1, 26 DEC 2024 to 23 JAN 2025

SE-1, 26 DEC 2024 to 23 JAN 2025