

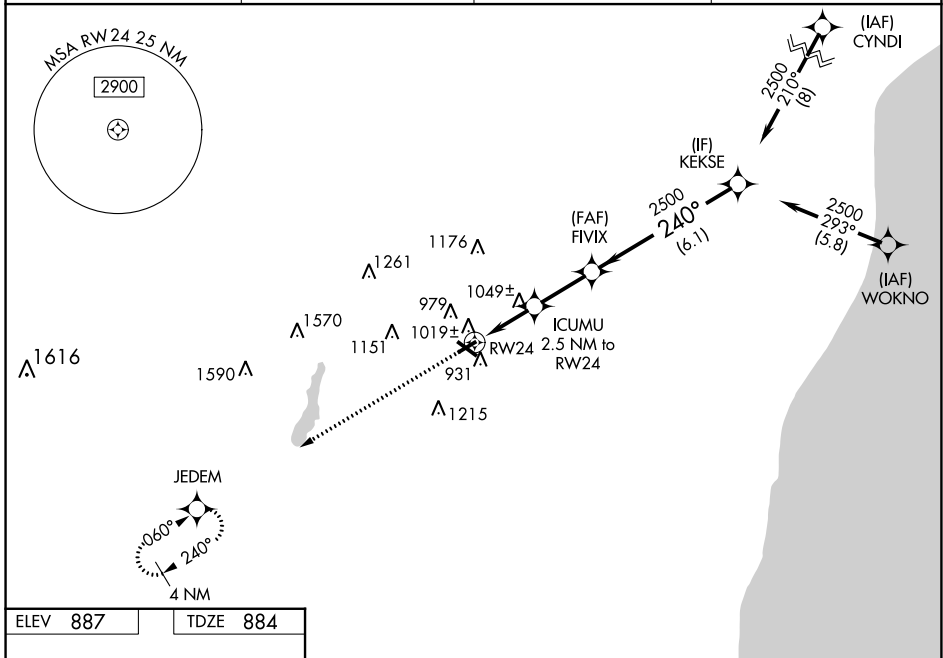
WAAS CH 70716 W24A	APP CRS 240°	Rwy Idg TDZE Apt Elev	3898 884 887
--	------------------------	-----------------------------	---

RNAV (GPS) RWY 24

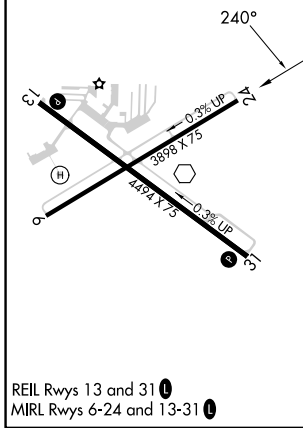
WEST BEND MUNI (E/TB)

RNP APCH - GPS.	<p>▼ For uncompensated Baro-VNAV systems, LNAV/VNAV NA below -16°C or above 47°C. Rwy 24 helicopter visibility reduction below ½ SM NA. Baro-VNAV and VDP NA when using Lawrence J Timmerman altimeter setting. When local altimeter setting not received, use Milwaukee/Lawrence J Timmerman altimeter setting and increase LPV DA to 1260 feet; LNAV/VNAV DA to 1433 feet and all visibility ¼ SM; increase all MDA 80 feet and LNAV Cat C/D and Circling Cat C/D visibility ¼ SM.</p>	MISSED APPROACH: Climb to 3000 direct JEDEM and hold.
-----------------	--	--

AWOS-3 120.0	MILWAUKEE APP CON 125.35 307.0	CLNC DEL 124.75	UNICOM 123.05 (CTAF) 0
------------------------	--	---------------------------	----------------------------------



ELEV 887	TDZE 884
----------	----------



3000	JEDEM	Procedure Turn NA		
* LNAV only	ICUMU 2.5 NM to RW24	FIVIX		
	* 1.2 NM to RW24	KEKSE		
	RW24	2500		
	* 1720	GP 3.00° TCH 45		
	1.2 NM	1.3 NM		
	2.4 NM	6.1 NM		
CATEGORY	A	B	C	D
LPV DA	1196-1 312 (400-1)			
LNAV/VNAV DA	1369-1¾ 485 (500-1¾)			
LNAV MDA	1300-1	416 (500-1)	1300-1¼	416 (500-1¼)
CIRCLING	1420-1 533 (600-1)	1520-1 633 (700-1)	1560-2 673 (700-2)	1560-2½ 673 (700-2½)

EC-3, 26 DEC 2024 to 23 JAN 2025

EC-3, 26 DEC 2024 to 23 JAN 2025