

WAAS CH <b>70705</b> <b>W05A</b>	APP CRS <b>051°</b>	Rwy Idg TDZE Apt Elev	<b>5002</b> <b>193</b> <b>193</b>
--	------------------------	-----------------------------	---

# RNAV (GPS) RWY 5

TRI CITIES EXEC/DINWIDDIE COUNTY (PTB)

RNP APCH - GPS.

**▼** Inop table does not apply to LPV all Cats, LNAV/VNAV all Cats and LNAV Cat A and B.  
**▲** Rwy 5 helicopter visibility reduction below 3/4 SM NA. For uncompensated Baro-VNAV systems, LNAV/VNAV NA below -15°C or above 54°C.



MISSED APPROACH:  
Climb to 2000 direct  
ONIKE and hold.

AWOS-3  
**133.325**

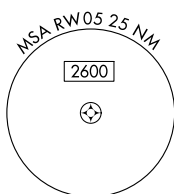
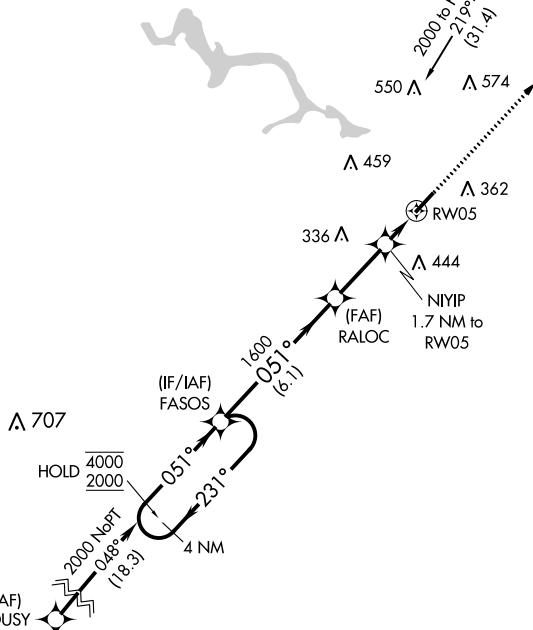
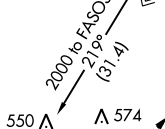
POTOMAC APP CON  
**126.75 307.2**

GCO  
**135.075**

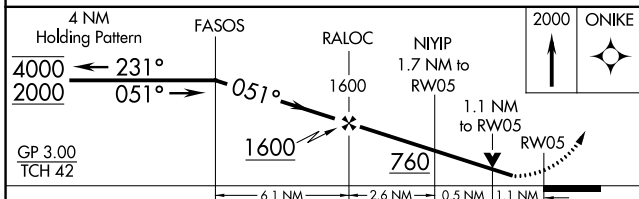
UNICOM  
**122.7 (CTAF) ①**

Procedure NA for arrival on RIC VORTAC  
airway radials 146 CW 283.

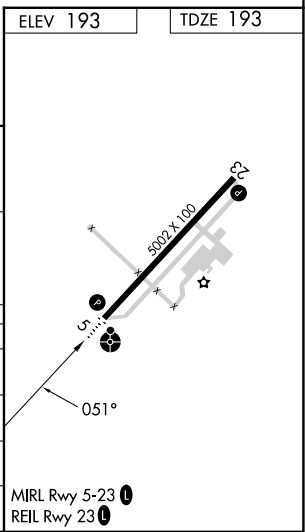
RICHMOND  
RIC



ELEV 193	TDZE 193
----------	----------



CATEGORY	A	B	C	D
LPV DA	511-1	318 (400-1)		NA
LNAV/VNAV DA	597-1	404 (500-1)		NA
LNAV MDA	600-1	407 (500-1)		NA
CIRCLING	680-1	487 (500-1)	760-1½ 567 (600-1½)	NA



NE-3, 26 DEC 2024 to 23 JAN 2025

NE-3, 26 DEC 2024 to 23 JAN 2025