

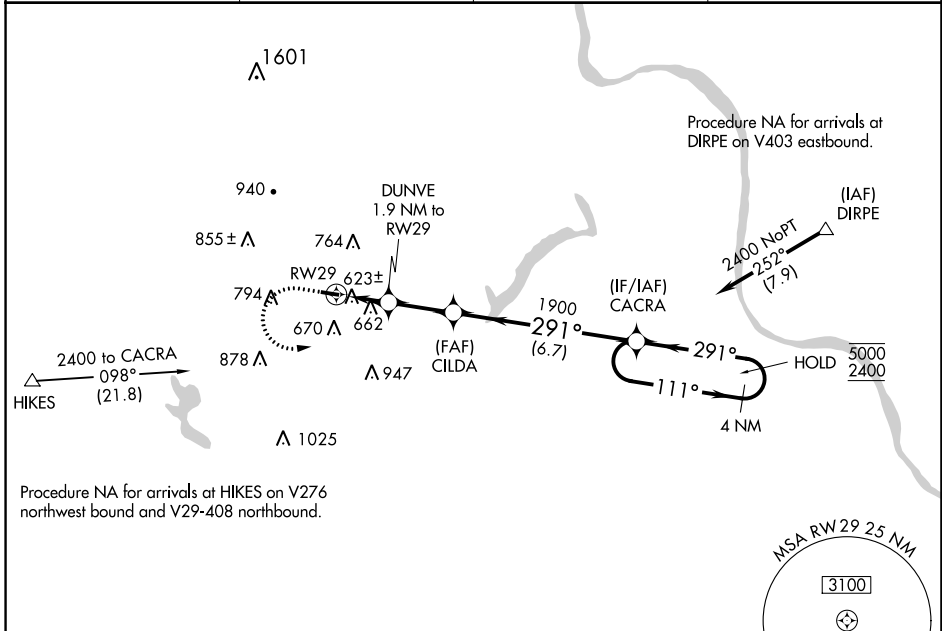
WAAS CH 61228 W29A	APP CRS 291°	Rwy Idg TDZE Apt Elev	3020 525 525
--	------------------------	-----------------------------	---

RNAV (GPS) RWY 29

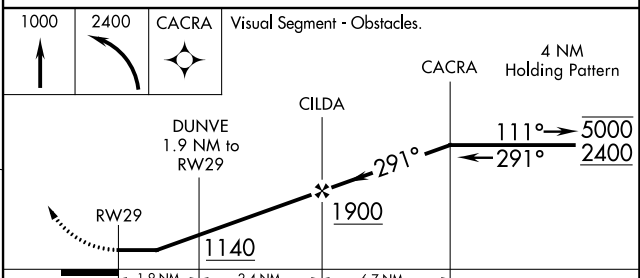
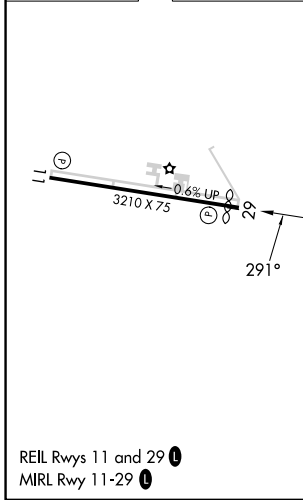
QUAKERTOWN (UKT)

RNP APCH - GPS.	MISSED APPROACH: Climb to 1000, then climbing left turn to 2400 direct CACRA and hold.
⚠ Circling Rwy 11 NA at night. ⚠ Rwy 29 helicopter visibility reduction below 3/4 SM NA.	

AWOS-3 119.475	PHILADELPHIA APP CON 123.8 291.7	CLNC DEL 118.55	UNICOM 122.725 (CTAF) 0
--------------------------	--	---------------------------	--



ELEV 525	D	TDZE 525
----------	----------	----------



CATEGORY	A	B	C	D
LP MDA	920-1	395 (400-1)	920-1 1/8 395 (400-1 1/8)	NA
LNAV MDA	960-1	435 (500-1)	960-1 1/4 435 (500-1 1/4)	NA
C CIRCLING	1040-1 515 (600-1)	1080-1 555 (600-1)	1220-2 695 (700-2)	NA

NE-4, 26 DEC 2024 to 23 JAN 2025

NE-4, 26 DEC 2024 to 23 JAN 2025