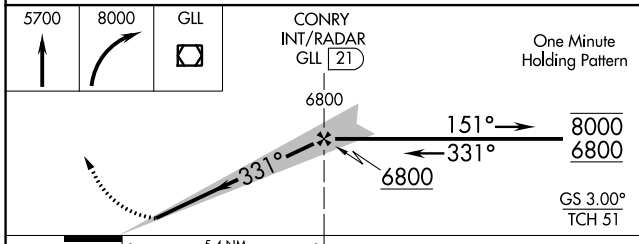
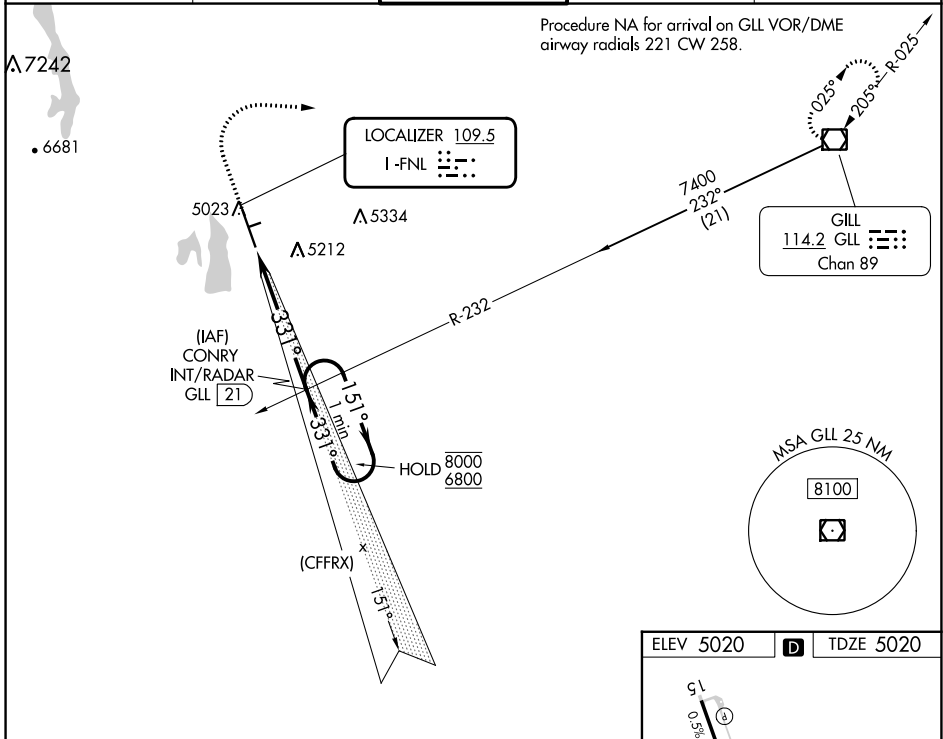


LOC I-FNL 109.5	APP CRS 331°	Rwy Idg 8500	TDZE 5020
		Apt Elev 5020	

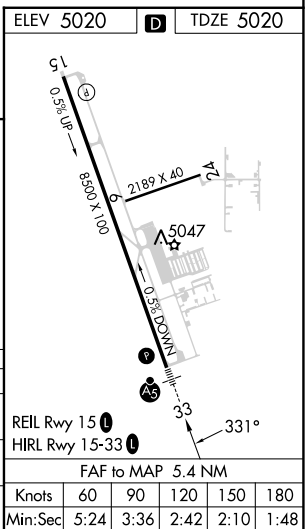
ILS or LOC RWY 33

NORTHERN COLORADO RGNL (F'NL)

<p>Circling Rwy 24 NA at night.</p>		<p>MALS</p>	<p>MISSED APPROACH: Climb to 5700 then climbing right turn to 8000 direct GLL VOR/DME and hold.</p>	
<p>ATIS 135.075</p>	<p>DENVER APP CON 134.85 251.125</p>	<p>NOCO TOWER★ 118.4 (CTAF) 0</p>	<p>GND CON 121.65</p>	<p>CLNC DEL 120.25 (When twr closed)</p>



CATEGORY	A	B	C	D
S-ILS 33	5220-1/2 200 (200-1/2)			
S-LOC 33	5500-1/2 480 (500-1/2)		5500-1 480 (500-1)	
CIRCLING	5500-1 480 (500-1)	5520-1 500 (500-1)	5520-1 1/2 500 (500-1 1/2)	5700-2 1/4 680 (700-2 1/4)



SW-1, 26 DEC 2024 to 23 JAN 2025

SW-1, 26 DEC 2024 to 23 JAN 2025