

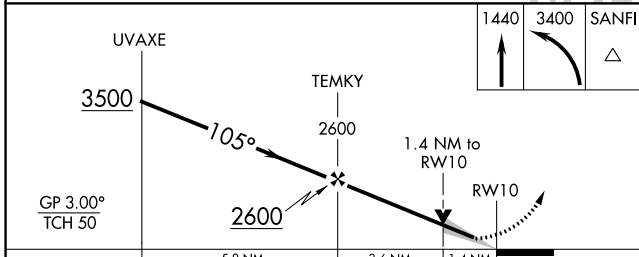
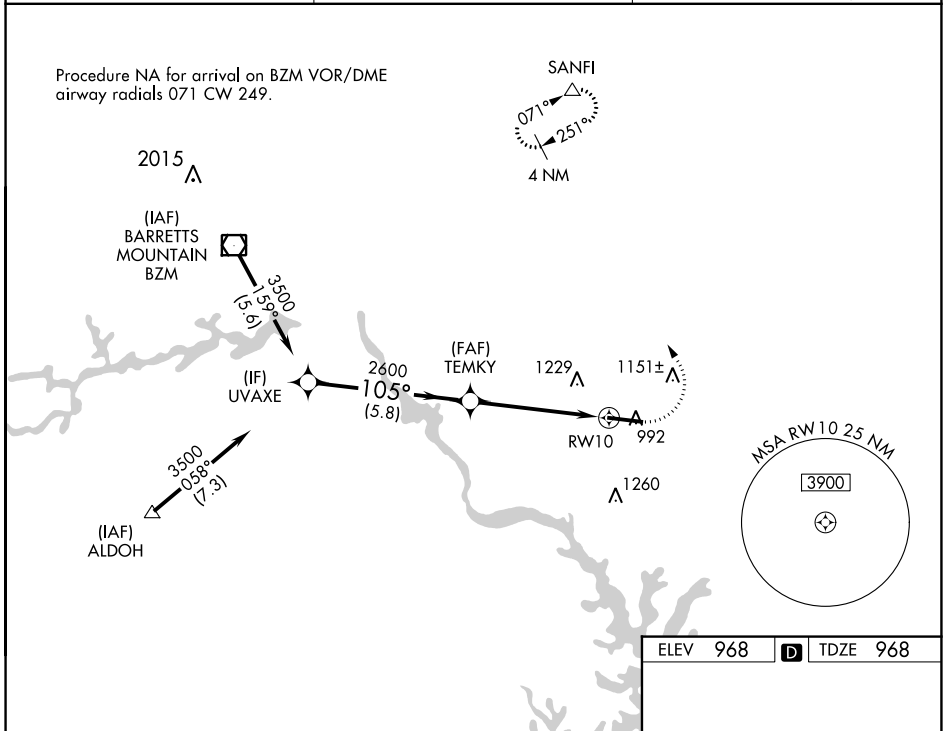
WAAS CH <b>99435</b> <b>W10A</b>	APP CRS <b>105°</b>	Rwy Idg TDZE Apt Elev	<b>6453</b> <b>968</b> <b>968</b>
--	------------------------	-----------------------------	---

# RNAV (GPS) RWY 10

STATESVILLE RGNL (SVH)

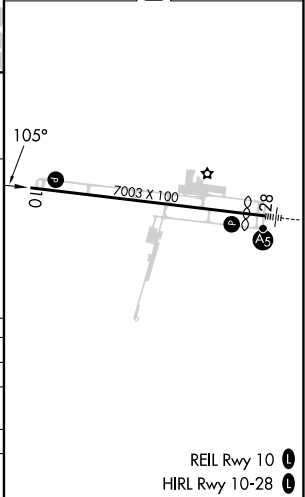
RNP APCH - GPS.		MISSED APPROACH: Climb to 1440 then climbing left turn to 3400 direct SANFI and hold.
▼ ▲	For uncompensated Baro-VNAV systems, LNAV/VNAV NA below -16°C or above 54°C.	

AWOS-3 <b>119.225</b>	ATLANTA CENTER <b>125.15 263.0</b>	UNICOM <b>123.075 (CTAF) 0</b>
--------------------------	---------------------------------------	-----------------------------------



ELEV 968	<b>D</b>	TDZE 968
----------	----------	----------

CATEGORY	A	B	C	D
LPV DA		1218-3/4	250 (300-3/4)	
LNAV/VNAV DA		1479-1 3/8	511 (600-1 3/8)	
LNAV MDA	1440-1	472 (500-1)	1440-1 3/8	472 (500-1 3/8)
<b>C</b> CIRCLING	1440-1 472 (500-1)	1540-1 572 (600-1)	1540-1 1/2 572 (600-1 1/2)	1560-2 592 (600-2)



SE-2, 26 DEC 2024 to 23 JAN 2025

SE-2, 26 DEC 2024 to 23 JAN 2025