

WAAS CH <b>60903</b> <b>W28A</b>	APP CRS <b>285°</b>	Rwy Idg TDZE <b>967</b> Apt Elev <b>968</b>	<b>6453</b>
--	------------------------	---	-------------

# RNAV (GPS) RWY 28

STATESVILLE RGNL (SVH)

RNP APCH - GPS.

▼ For uncompensated Baro-VNAV systems, LNAV/VNAV NA below -16°C or above 54°C.  
 ▲ When local altimeter setting not received, use Lincolnton altimeter setting and increase LPV DA to 1218, LNAV/VNAV DA to 1269, and all MDA 60 feet; increase LNAV/VNAV all Cats and LNAV Cats C/D visibility 1/8, and Circling Cat C 1/4 mile. VDP and Baro-VNAV NA when using Lincolnton altimeter setting. For inop MALSRS, increase LNAV/VNAV all Cats and LNAV Cats C/D visibility to 2/8 mile. For inop MALSRS when using Lincolnton altimeter setting, increase LNAV/VNAV all Cats and LNAV Cats C/D visibility to 1 mile.

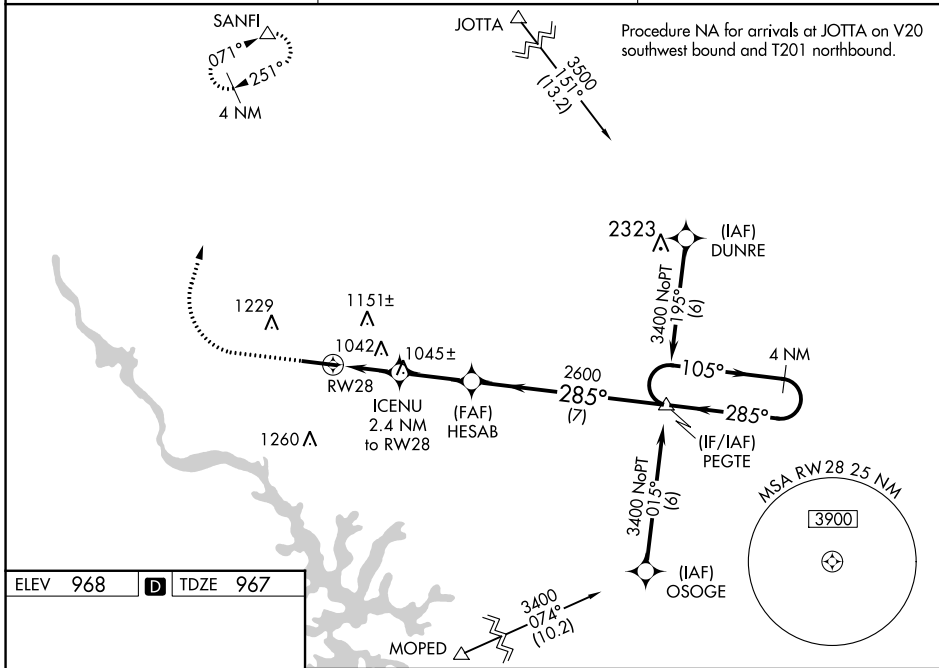


MISSED APPROACH:  
 Climb to 1380 then climbing right turn to 3400 direct SANFI and hold.

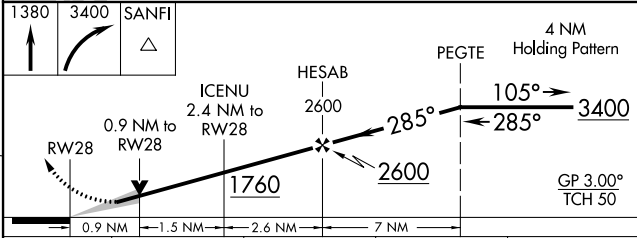
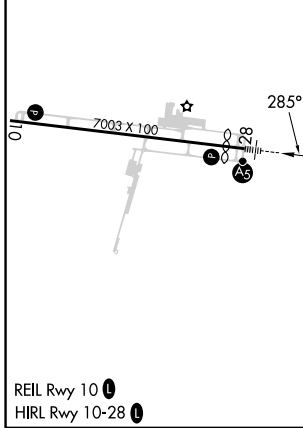
AWOS-3  
**119.225**

ATLANTA CENTER  
**125.15 263.0**

UNICOM  
**123.075 (CTAF) ①**



ELEV 968	<b>D</b>	TDZE 967
----------	----------	----------



CATEGORY	A	B	C	D
LPV DA		1167-3/4	200 (200-3/4)	
LNAV/VNAV DA		1218-3/4	251 (300-3/4)	
LNAV MDA		1300-3/4	333 (400-3/4)	
<b>C</b> CIRCLING	1420-1 452 (500-1)	1540-1 572 (600-1)	1540-1 1/2 572 (600-1 1/2)	1560-2 592 (600-2)

SE-2, 26 DEC 2024 to 23 JAN 2025

SE-2, 26 DEC 2024 to 23 JAN 2025