

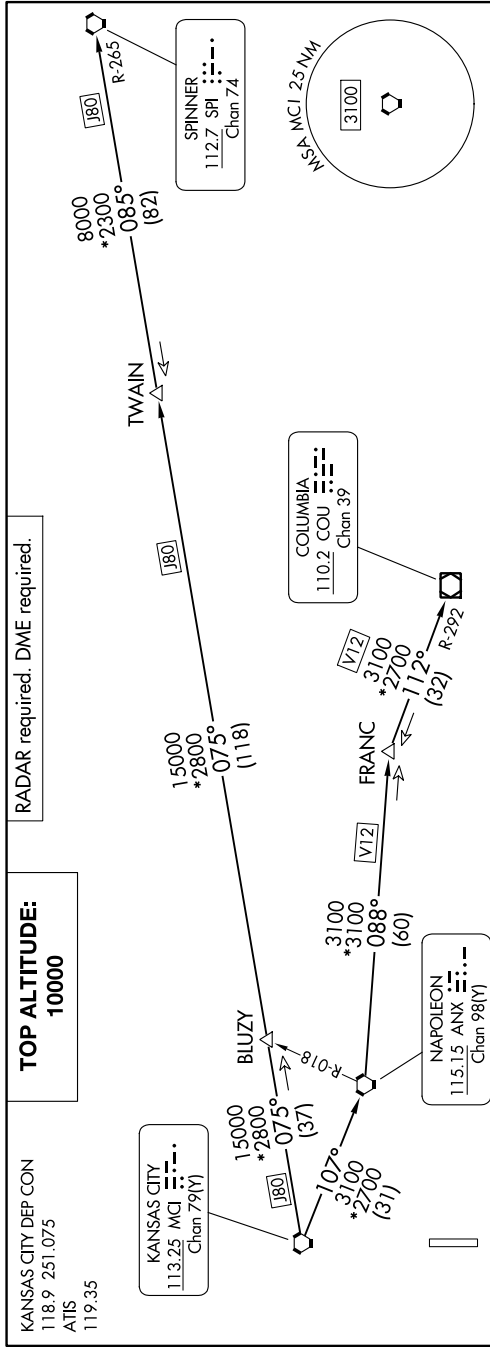
LAKES FIVE DEPARTURE

AL-5687 (FAA)

JOHNSON COUNTY EXEC (OJC)

OLATHE, KANSAS

NC-2, 26 DEC 2024 to 23 JAN 2025



TOP ALTITUDE:
10000

KANSAS CITY DEP CON
118.9 251.075
ATIS
119.35

LAKES FIVE DEPARTURE

(LAKES5.MCI) 05OCT23

DEPARTURE ROUTE DESCRIPTION

TAKEOFF ALL RUNWAYS: Climb on assigned heading for RADAR vectors to appropriate route. Maintain 10000 or as assigned by ATC. Expect filed altitude 10 minutes after departure.

COLUMBIA TRANSITION [LAKES5.COU]: From over MCI VORTAC on MCI R-107 to ANX VORTAC, then on ANX R-088 and COU R-292 to COU VOR/DME.

FRANC TRANSITION [LAKES5.FRANC]: From over MCI VORTAC on MCI R-107 to ANX VORTAC, then on ANX R-088 to FRANC.

SPINNER TRANSITION [LAKES5.SPI]: From over MCI VORTAC on MCI R-075 and SPI R-265 to TWAIN, then on SPI R-265 to SPI VORTAC.

TWAIN TRANSITION [LAKES5.TWAIN]: From over MCI VORTAC on MCI R-075 and SPI R-265 to TWAIN.

TAKEOFF MINIMUMS
Rwys 18, 36: Standard.

NOTE: Chart not to scale.

NC-2, 26 DEC 2024 to 23 JAN 2025