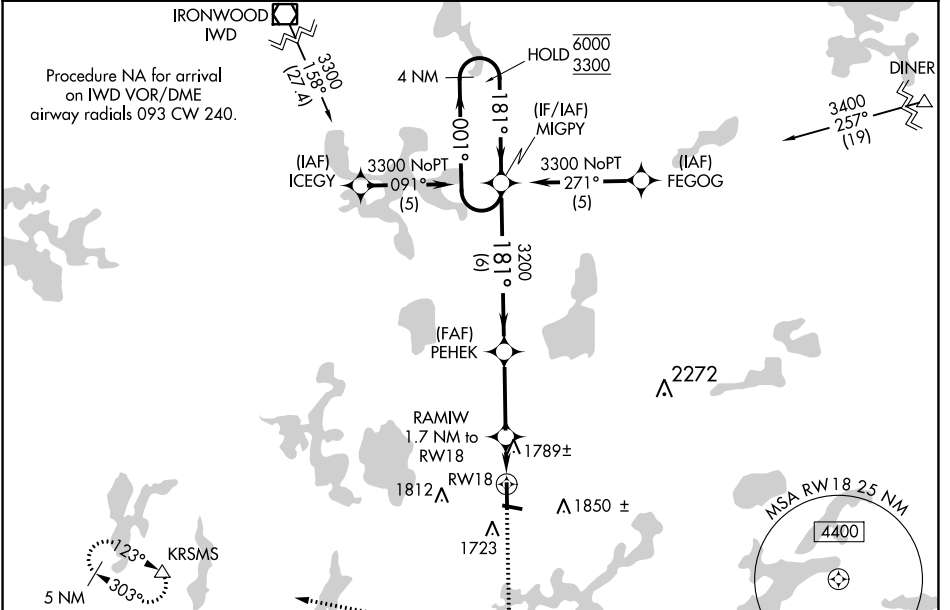


WAAS CH <b>72915</b> <b>W18A</b>	APP CRS <b>181°</b>	Rwy Idg TDZE Apt Elev	<b>5150</b> <b>1630</b> <b>1630</b>
--	------------------------	-----------------------------	---

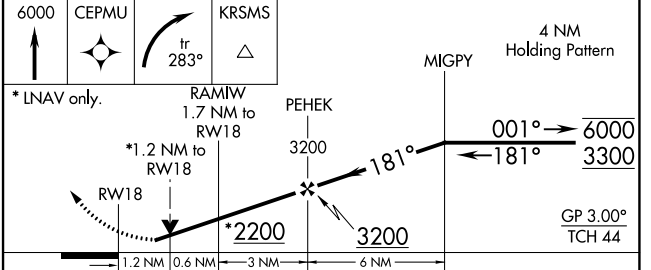
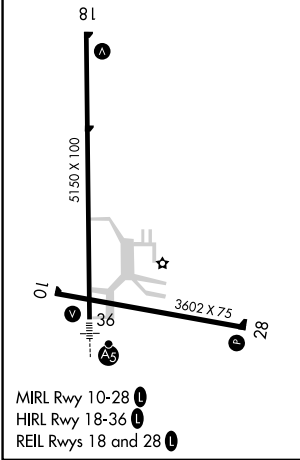
# RNAV (GPS) RWY 18

LAKELAND/NOBLE F LEE MEML FLD (A.R.V)

RNP APCH.	MISSED APPROACH: Climb to 6000 direct CEPMU and right turn on track 283° to KRMS and hold, continue climb-in-hold to 6000.	
AWOS-3 <b>121.125</b>	MINNEAPOLIS CENTER <b>133.65 281.5</b>	UNICOM <b>122.7 (CTAF)</b>



ELEV 1630	TDZE 1630
-----------	-----------



CATEGORY	A	B	C	D
LPV DA		1974-1¼	344 (400-1¼)	
LNAV/VNAV DA		2101-1¾	471 (500-1¾)	
LNAV MDA	2040-1	410 (500-1)	2040-1¼	410 (500-1¼)
<b>C</b> CIRCLING	2100-1 470 (500-1)	2200-1 570 (600-1)	2200-1½ 570 (600-1½)	2220-2 590 (600-2)

# RNAV (GPS) RWY 18

EC-3, 26 DEC 2024 to 23 JAN 2025

EC-3, 26 DEC 2024 to 23 JAN 2025