

BARMY FIVE DEPARTURE (RNAV)

SE-2, 26 DEC 2024 to 23 JAN 2025

CHARLOTTE DEP CON
120.05 307.8
ASOS
135.775
CINC DEL
132.55
UNICOM
122.7

TOP ALTITUDE:
3000

RNAV 1 - DME/DME/IRU or GPS.
RADAR required.

DATTO

RALEIGH/DURHAM
RDU

TAR RIVER
TYI

NOTE: For turbo jets only.
NOTE: if unable to accept climb rates, advise ATC on initial contact.
NOTE: Transponder code will be issued via PDC or Charlotte CLNC DEL.
NOTE: Upon reaching 10000 MSL, accelerate to and maintain 280K,
if unable advise ATC.

OLUBE

BATTA

FL180 *1900

077° (39)

10400

*2100

077° (13)

BARMY

088° (18)

GULFY

MESHY

N



EBOOK

MESHY

GULFY

BARMY

BATTA

OLUBE

RALEIGH/DURHAM
RDU

TAR RIVER
TYI

NUTZE

FL180 *3300

078° (17)

084°

FL180 *3400

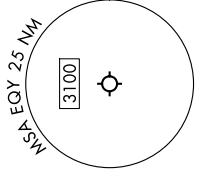
(70)

DEPARTURE ROUTE DESCRIPTION

Climb on heading assigned by ATC on RADAR vectors to MESHY, then on depicted route to BARMY. Then on assigned transition. Maintain 3000, expect clearance to filed altitude within 10 minutes after departure.

- NUTZE TRANSITION (BARMY5.NUTZE)
- RALEIGH/DURHAM TRANSITION (BARMY5.RDU)
- TAR RIVER TRANSITION (BARMY5.TYI)

TAKEOFF MINIMUMS
Rwys 5, 23: Standard.



NOTE: Chart not to scale.

BARMY FIVE DEPARTURE (RNAV)

SE-2, 26 DEC 2024 to 23 JAN 2025