

NDB UMB <b>380</b>	APP CRS <b>276°</b>	Rwy Idg TDZE Apt Elev	<b>5424</b> <b>379</b> <b>385</b>
-----------------------	------------------------	-----------------------------	---

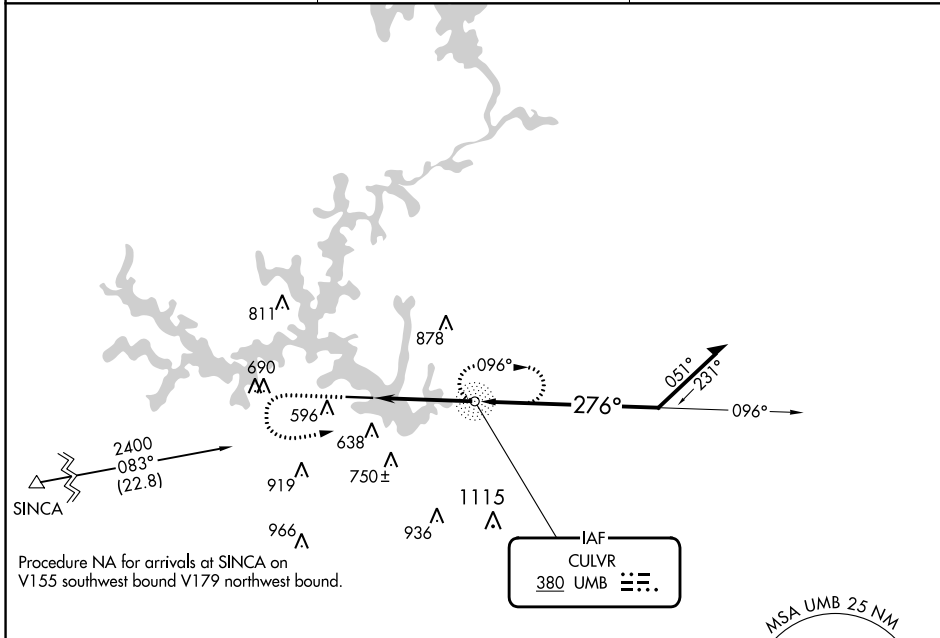
# NDB RWY 28

BALDWIN COUNTY RGNL (MLJ)

**⚠** Rwy 28 helicopter visibility reduction below  $\frac{3}{4}$  SM NA.

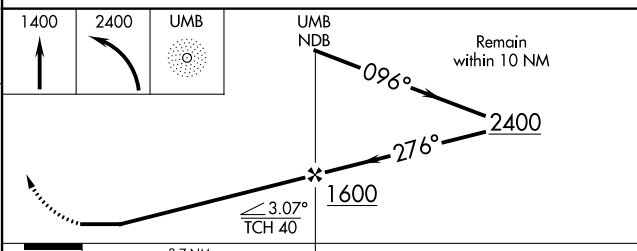
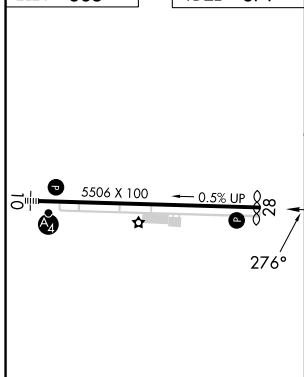
**⚠** MISSED APPROACH: Climb to 1400 then climbing left turn to 2400 direct UMB NDB and hold, continue climb-in-hold to 2400.

AWOS-3 <b>120.925</b>	ATLANTA APP CON ★ <b>124.2 279.6</b>	UNICOM <b>122.975 (CTAF) 0</b>
--------------------------	---	-----------------------------------



Procedure NA for arrivals at SINCA on V155 southwest bound V179 northwest bound.

ELEV 385	TDZE 379
----------	----------



MIRL Rwy 10-28 0				
REIL Rwys 10 and 28 0				
FAF to MAP 3.7 NM				
Knots	60	90	120	150
Min:Sec	3:42	2:28	1:51	1:29
180				
1:14				
<b>C</b> CIRCLING	940-1	555 (600-1)	1080-2 695 (700-2)	1280-3 895 (900-3)

SE-4, 26 DEC 2024 to 23 JAN 2025

SE-4, 26 DEC 2024 to 23 JAN 2025