

LOC/DME I-RBW 110.15 Chan 38 (Y)	APP CRS 229°	Rwy ldg TDZE Apt Elev	6002 101 101
---	------------------------	-----------------------------	---

ILS Y or LOC Y RWY 23

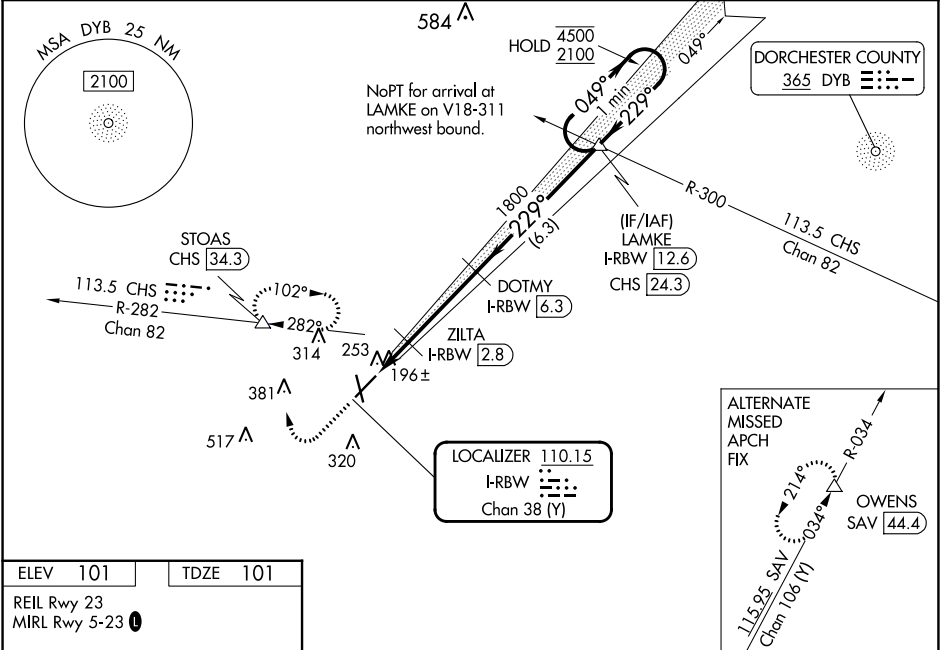
LOWCOUNTRY RGNL (R.B.W)

DME required.

ODALS

MISSED APPROACH: Climb to 700 then climbing right turn to 2000 on heading 360° and CHS VORTAC R-282 to STOAS/CHS VORTAC 34.3 DME and hold, continue climb-in-hold to 2000, or as directed by ATC.

AWOS-3PT 118.725	CHARLESTON APP CON 120.7 306.925	UNICOM 122.8 (CTAF)
----------------------------	--	-------------------------------



ELEV 101 TDZE 101

REIL Rwy 23
MIRL Rwy 5-23

FAF to MAP 5.2 NM

Knots	60	90	120	150	180
Min:Sec	5:12	3:28	2:36	2:05	1:44

700 2000

hdg 360°

STOAS CHS R-282

VGSI and ILS glidepath not coincident (VGSI Angle 3.00/TCH 46).

One Minute Holding Pattern

ZILTA I-RBW 2.8

DOTMY I-RBW 6.3

LAMKE I-RBW 12.6

I-RBW 1.1 2.1

680 1800

049° 229°

4500 2100

GS 3.00° TCH 43

CATEGORY	A	B	C	D
S-ILS 23	301-¾ 200 (200-¾)			
S-LOC 23	460-¾ 359 (400-¾)	460-⅞ 359 (400-⅞)		
<input checked="" type="checkbox"/> CIRCLING	620-1 519 (600-1)	700-1½ 599 (600-1½)	700-2 599 (600-2)	

SE-2, 26 DEC 2024 to 23 JAN 2025

SE-2, 26 DEC 2024 to 23 JAN 2025