

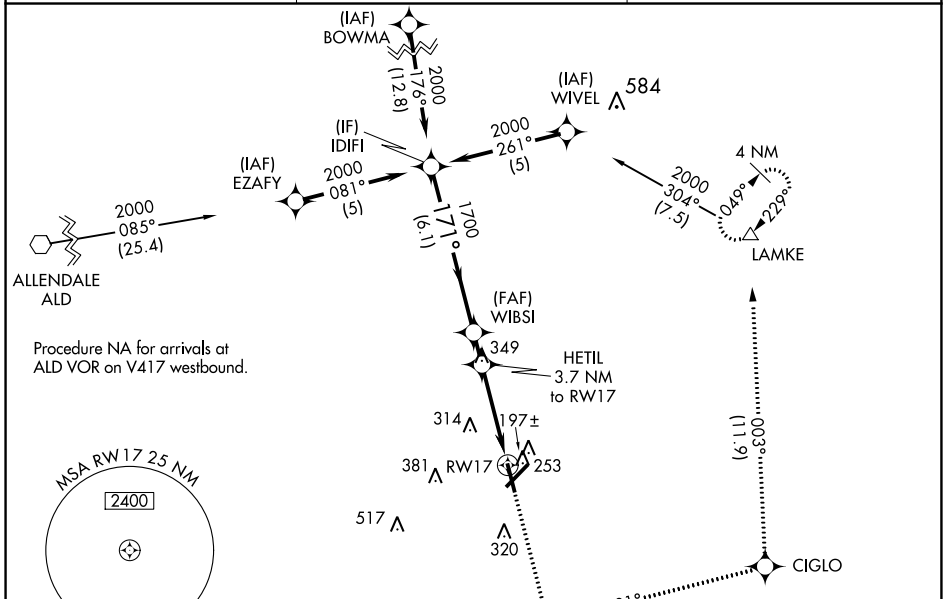
WAAS CH <b>93616</b> <b>W17A</b>	APP CRS <b>171°</b>	Rwy Idg TDZE <b>93</b> Apt Elev <b>101</b>	<b>5705</b>
--	------------------------	---	-------------

**RNAV (GPS) RWY 17**  
LOWCOUNTRY RGNL (R.B.W)

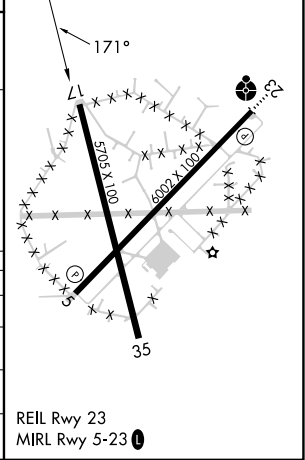
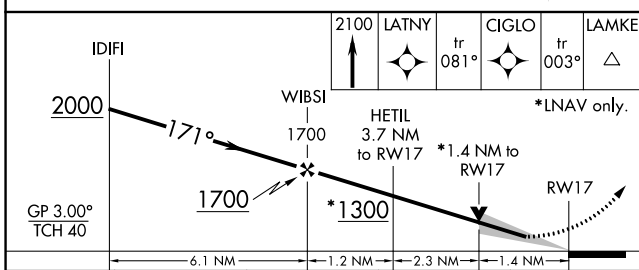
▼ For uncompensated Baro-VNAV systems, LNAV/VNAV NA below -15°C (5°F) or above 54°C (130°F). Baro-VNAV and VDP NA when using Charleston Intl/AFB altimeter setting.  
 ▲ DME/DME RNP-0.3 NA. When local altimeter setting not received, use Charleston AFB/Intl altimeter setting: increase LPV DA to 421 feet and LNAV/VNAV DA to 587 feet and all MDA 80 feet; increase LPV visibility all Cats ½ mile; increase LNAV/VNAV visibility all Cats, LNAV Cats C/D, and Circling Cat D visibility ¼ mile; increase Circling Cat C visibility ½ mile.

**MISSED APPROACH:**  
Climb to 2100 direct LATNY and on track 081° to CIGLO and track 003° to LAMKE and hold.

<b>AWOS-3PT</b> <b>118.725</b>	<b>CHARLESTON APP CON</b> <b>120.7 306.925</b>	<b>UNICOM</b> <b>122.8 (CTAF) 0</b>
-----------------------------------	---	--



ELEV	101	TDZE	93
------	-----	------	----



CATEGORY	A	B	C	D
LPV DA	343-1 250 (300-1)			
LNAV/ VNAV DA	508-1½		415 (500-1½)	
LNAV MDA	580-1 487 (500-1)		580-1⅔ 487 (500-1⅔)	
CIRCLING	620-1 519 (600-1)	640-1 539 (600-1)	700-1½ 599 (600-1½)	700-2 599 (600-2)

SE-2, 26 DEC 2024 to 23 JAN 2025

SE-2, 26 DEC 2024 to 23 JAN 2025