

WAAS CH 56612 W18B	APP CRS 181°	Rwy Idg 6930 TDZE 32 Apt Elev 34
--	------------------------	---

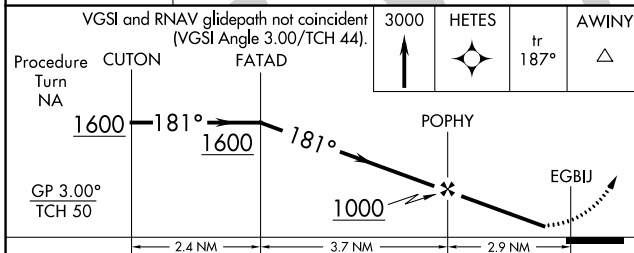
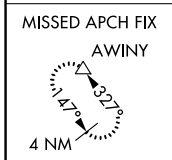
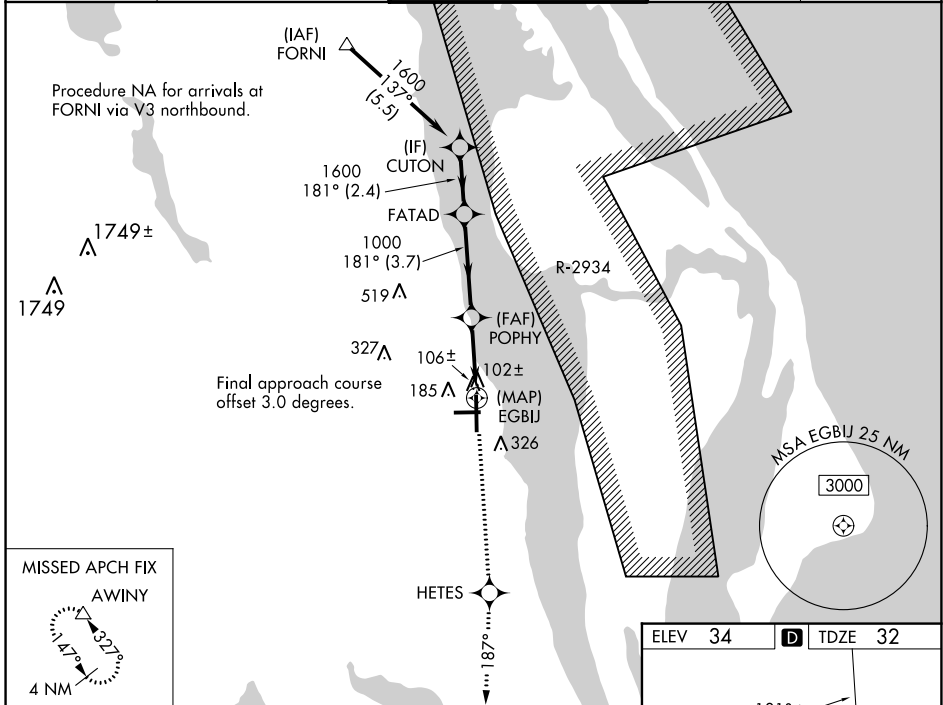
RNAV (GPS) Z RWY 18

SPACE COAST RGNL (TIX)

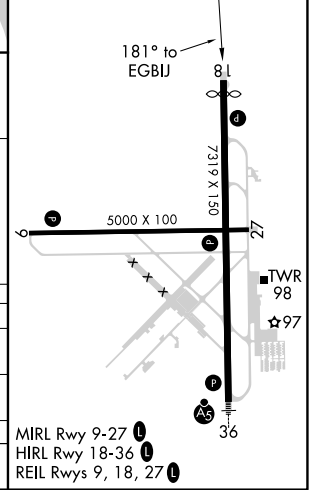
▼ Baro-VNAV NA when using Melbourne altimeter setting. For uncompensated Baro-VNAV systems, LNAV/VNAV NA below -15°C (5°F) or above 47°C (116°F). DME/DME RNP-0.3 NA. Visibility reduction by helicopters NA. When control tower closed, use Melbourne altimeter setting.

MISSED APPROACH: Climb to 3000 direct HETES and via track 187° to AWINY and hold.

ATIS 120.625	ORLANDO APP CON 134.95 281.425	SPACE COAST TOWER ★ 118.9 (CTAF) 0	GND CON 121.85	UNICOM 122.95
------------------------	--	--	--------------------------	-------------------------



ELEV 34	TDZE 32
---------	---------



SE-3, 26 DEC 2024 to 23 JAN 2025

SE-3, 26 DEC 2024 to 23 JAN 2025