

WAAS CH <b>42912</b> <b>W19A</b>	APP CRS <b>189°</b>	Rwy Idg TDZE Apt Elev	<b>5002</b> <b>467</b> <b>473</b>
--	------------------------	-----------------------------	---

# RNAV (GPS) RWY 19

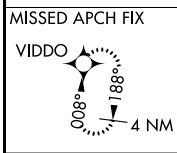
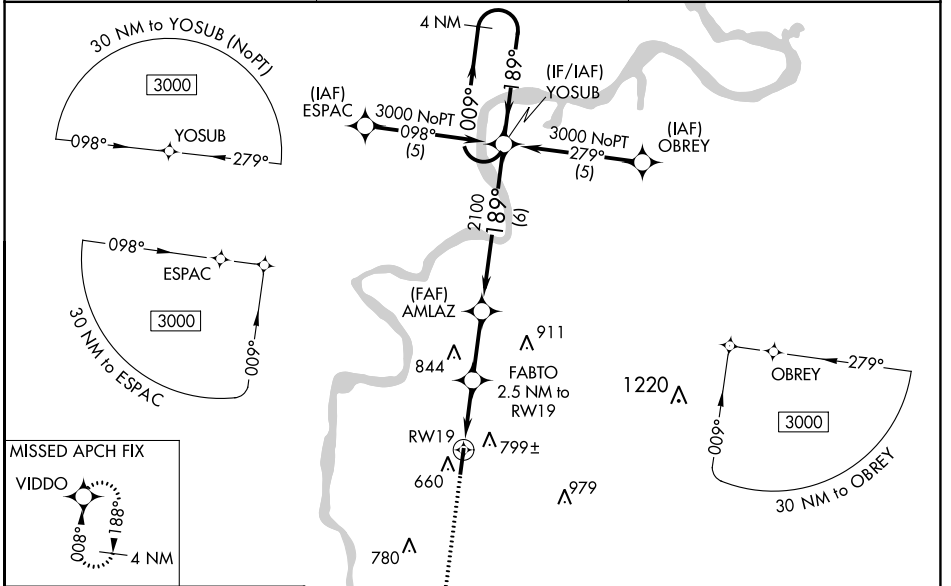
SAVANNAH-HARDIN COUNTY (SNH)

RNP APCH - GPS.

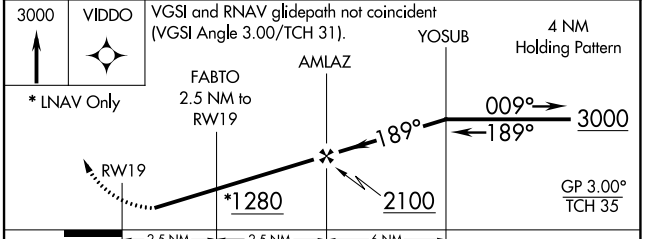
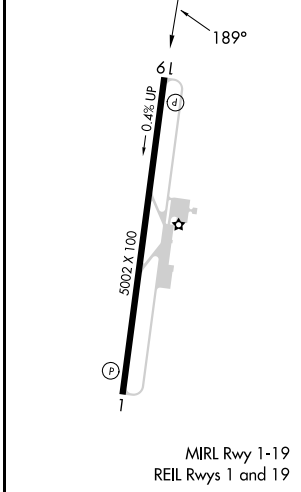
Baro-VNAV NA when using Muscle Shoals altimeter setting. For uncompensated Baro-VNAV systems, LNAV/VNAV NA below -15°C or above 54°C. When local altimeter setting not received use Muscle Shoals, AL altimeter setting: increase LPV DA to 976 feet and all visibilities ½ SM; increase LNAV/VNAV DA to 1102 feet and all visibilities ¼ SM; increase all MDA 120 feet and visibility LNAV and Circling Cat C ½ SM. Circling Rwy 1 NA at night.

MISSED APPROACH:  
Climb to 3000 direct VIDDO and hold.

AWOS-3 <b>133.925</b>	MEMPHIS CENTER <b>124.35 318.1</b>	UNICOM <b>122.8 (CTAF)</b>
--------------------------	---------------------------------------	-------------------------------



ELEV 473	TDZE 467
----------	----------



CATEGORY	A			B	C	D	
	1	2	3	406 (400-1½)	532 (600-2)	1060-1½ 593 (600-1½)	
LPV DA	873-1½						NA
LNAV/VNAV DA	999-2						NA
LNAV MDA	1060-1	593 (600-1)			1060-1½	593 (600-1½)	NA
CIRCLING	1100-1	627 (700-1)			1140-1¾	667 (700-1¾)	NA

SE-1, 26 DEC 2024 to 23 JAN 2025

SE-1, 26 DEC 2024 to 23 JAN 2025