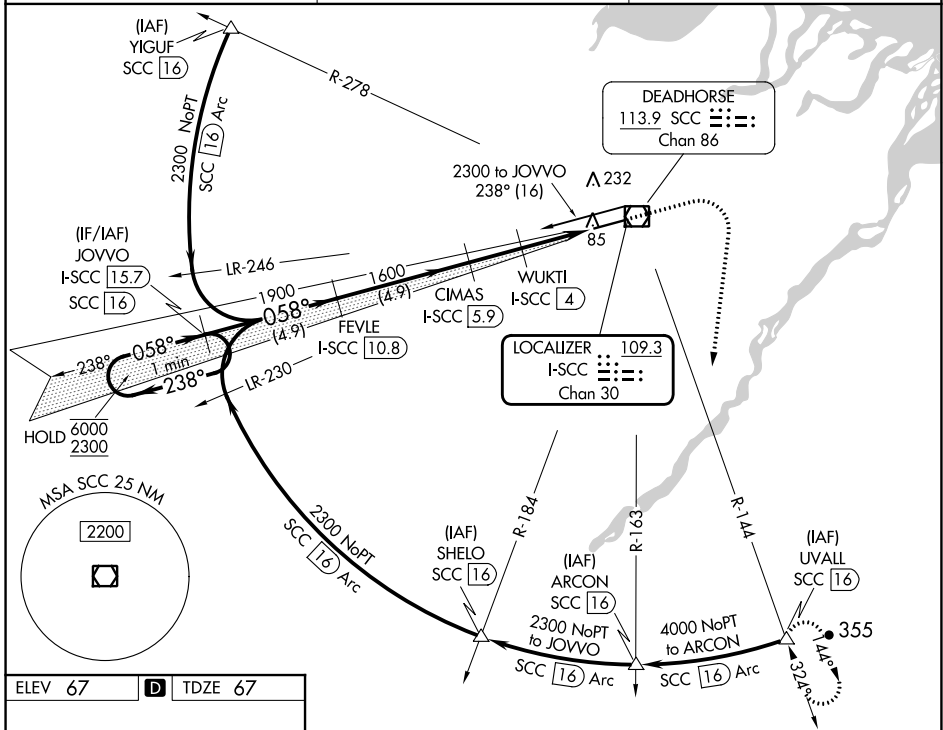


| | | |
|---|------------------------|---|
| LOC/DME I-SCC 109.3 Chan 30 | APP CRS 058° | Rwy Idg 6500 TDZE 67 Apt Elev 67 |
|---|------------------------|---|

ILS or LOC RWY 6 DEADHORSE (SCC) (PASC)

| | | |
|---|-----------|---|
| DME required. For inop ALS, increase S-ILS 6 Cat E visibility to RVR 4000 and S-LOC 6 Cats C/D/E to RVR 4500. *RVR 1800 authorized with use of FD or AP or HUD to DA. | MALSR | MISSED APPROACH: Climb to 1500 then climbing right turn to 4000 on heading 170° and SCC VOR/DME R-144 to UVALL/SCC 16 DME and hold. |
|---|-----------|---|

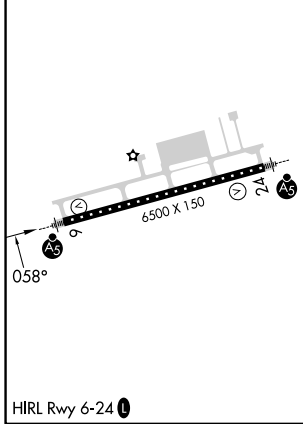
| | | |
|----------------------|--|--|
| AFIS 118.4 | ANCHORAGE CENTER 134.4 370.9 | DEADHORSE RADIO 123.6 (CTAF) |
|----------------------|--|--|



AK, 26 DEC 2024 to 20 FEB 2025

AK, 26 DEC 2024 to 20 FEB 2025

| | | |
|---------|----------|---------|
| ELEV 67 | D | TDZE 67 |
|---------|----------|---------|



| | | | | | |
|---|----------------------|---------------------------------------|------------------------------|---------|-------------|
| VGSi and ILS glidepath not coincident (VGSi Angle 3.00/TCH 50). | | 1500 | 4000 | SCC | UVALL |
| One Minute Holding Pattern | | ↑ | hdg 170° | △ | |
| Use I-SCC DME when on the localizer course. | | | | | |
| JOVVO I-SCC 15.7 | FEVLE I-SCC 10.8 | CIMAS I-SCC 5.9 | WUKTI I-SCC 4 | I-SCC 2 | I-SCC 1.3 |
| 6000 ← 238° | 2300 058° | 1900 | 1600 | 980 | |
| GS 3.00° TCH 58 | | ← 4.9 NM → 4.9 NM → 1.9 NM → 0.8 NM → | | | |
| CATEGORY | A | B | C | D | E |
| S-ILS 6* | 267/24 200 (200-1/2) | | | | |
| S-LOC 6 | 360/24 293 (300-1/2) | | | | |
| C CIRCLING | 540-1 | 473 (500-1) | 580-1 1/2 513 (600-1 1/2) | 620-2 | 553 (600-2) |