

WAAS CH 86740 W03A	APP CRS 030°	Rwy Idg TDZE 671 Apt Elev 671	5501
--	------------------------	---	-------------

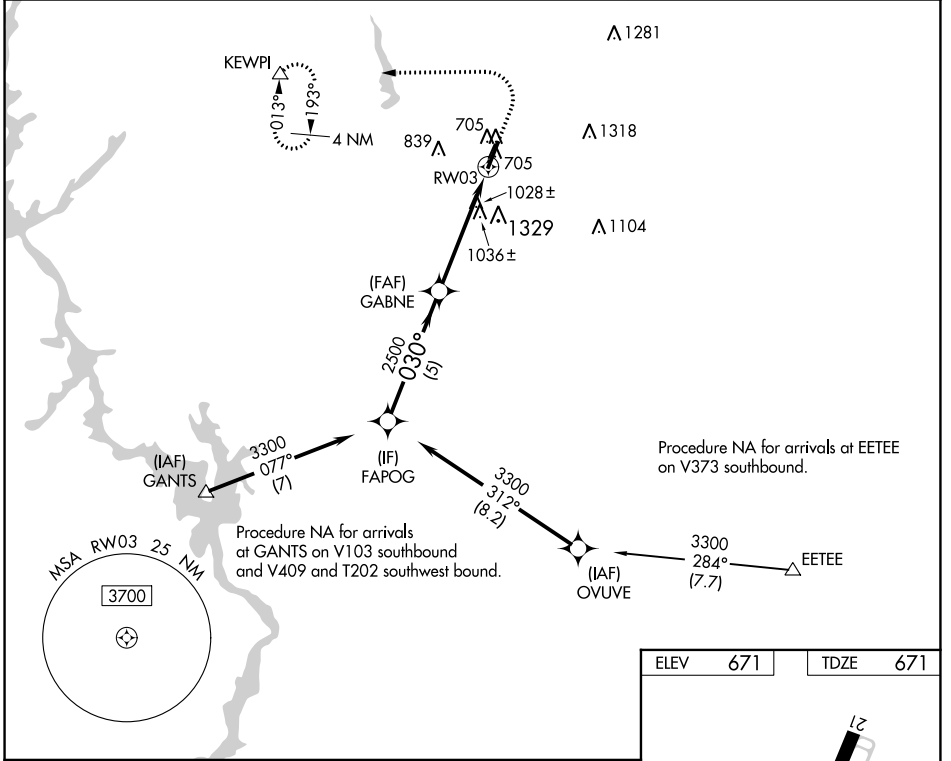
RNAV (GPS) RWY 3

ASHEBORO RGNL (HBI)

⚠ Rwy 3 helicopter visibility reduction below $\frac{3}{4}$ SM NA.
⚠ DME/DME RNP-0.3 NA.

MISSED APPROACH: (Do not exceed 250K until KEWPI) Climb to 1920 then climbing left turn to 3000 direct KEWPI and hold.

AWOS-3 119.275	GREENSBORO APP CON 126.6 327.075	UNICOM 122.8 (CTAF) 0
--------------------------	--	---------------------------------



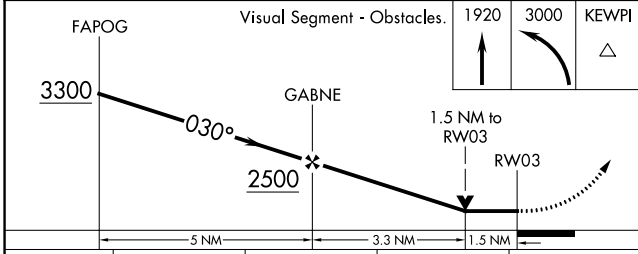
SE-2, 26 DEC 2024 to 23 JAN 2025

SE-2, 26 DEC 2024 to 23 JAN 2025

Procedure NA for arrivals at GANTS on V103 southbound and V409 and T202 southwest bound.

Procedure NA for arrivals at EETEE on V373 southbound.

ELEV	671	TDZE	671
------	-----	------	-----



CATEGORY		A	B	C	D
LP	MDA	1280-1	609 (700-1)	1280-1 $\frac{3}{4}$	609 (700-1 $\frac{3}{4}$)
LN	MDA	1300-1	629 (700-1)	1300-1 $\frac{3}{4}$	629 (700-1 $\frac{3}{4}$)
C	CIRCLING	1300-1 629 (700-1)	1360-1 689 (700-1)	1680-3	1009 (1100-3)

