

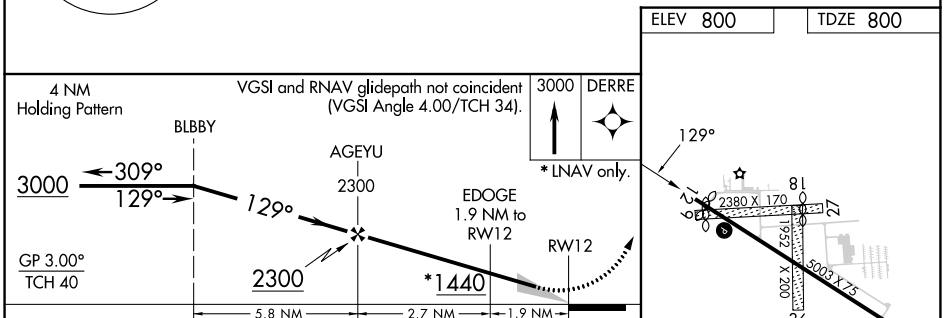
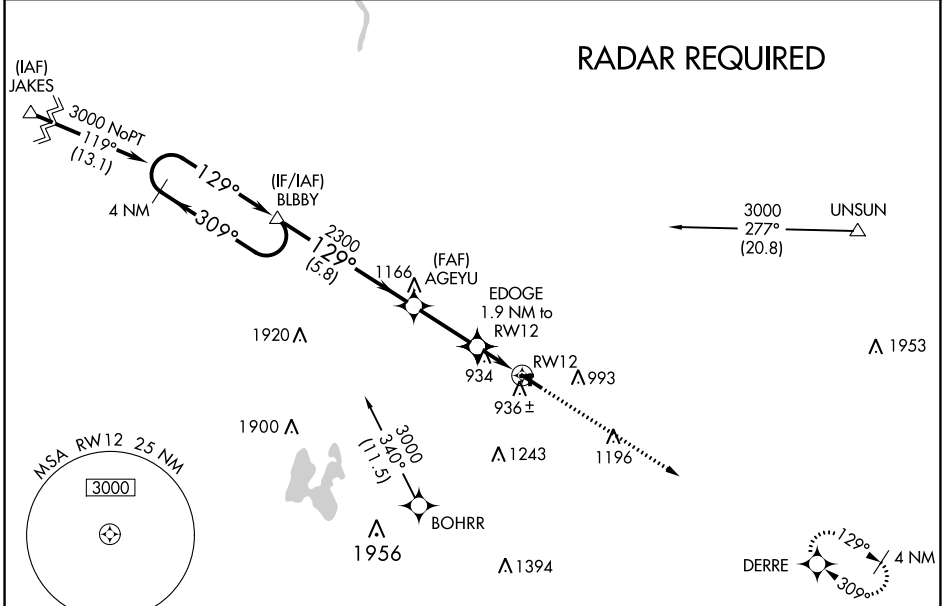
WAAS CH <b>53326</b> <b>W12A</b>	APP CRS <b>129°</b>	Rwy Idg TDZE Apt Elev	<b>4762</b> <b>800</b> <b>800</b>
--	------------------------	-----------------------------	---

# RNAV (GPS) RWY 12

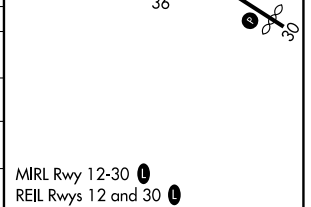
HASTINGS (9D9)

<p><b>▽</b> Circling NA to Rwy 9, 18, 27 and 36. Baro-VNAV NA. DME/DME RNP-0.3 NA.  <b>▲</b> NA Use Grand Rapids altimeter setting; when not received, use Ionia altimeter setting: increase LPV DA to 1102 feet; increase LNAV/VNAV DA to 1260 feet and all visibilities ½ SM; increase all MDA 20 feet, and LNAV visibility Cat C ¼ SM.</p>	<p>MISSED APPROACH: Climb to 3000 direct DERRE and hold.</p>
---	--

GRR ASOS <b>118.725</b>	GREAT LAKES APP CON* <b>128.4 257.6</b>	UNICOM <b>123.075 (CTAF) 0</b>
----------------------------	--	-----------------------------------



CATEGORY	A	B	C	D
LPV DA	1087-1 287 (300-1)			NA
LNAV/VNAV DA	1245-1½ 445 (500-1½)			NA
LNAV MDA	1240-1	440 (500-1)	1240-1¼ 440 (500-1¼)	NA
<b>C</b> CIRCLING	1380-1 580 (600-1)	1420-1 620 (700-1)	1440-1¾ 640 (700-1¾)	NA



EC-1, 26 DEC 2024 to 23 JAN 2025

EC-1, 26 DEC 2024 to 23 JAN 2025