

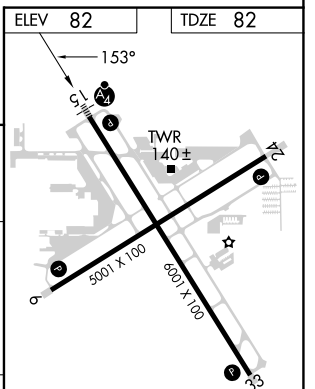
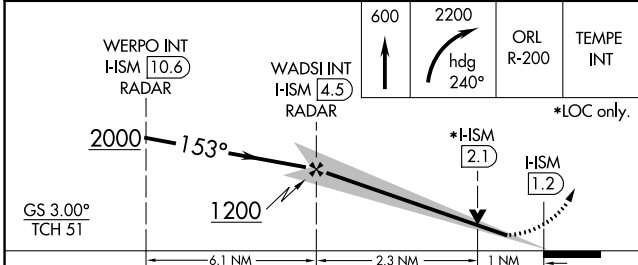
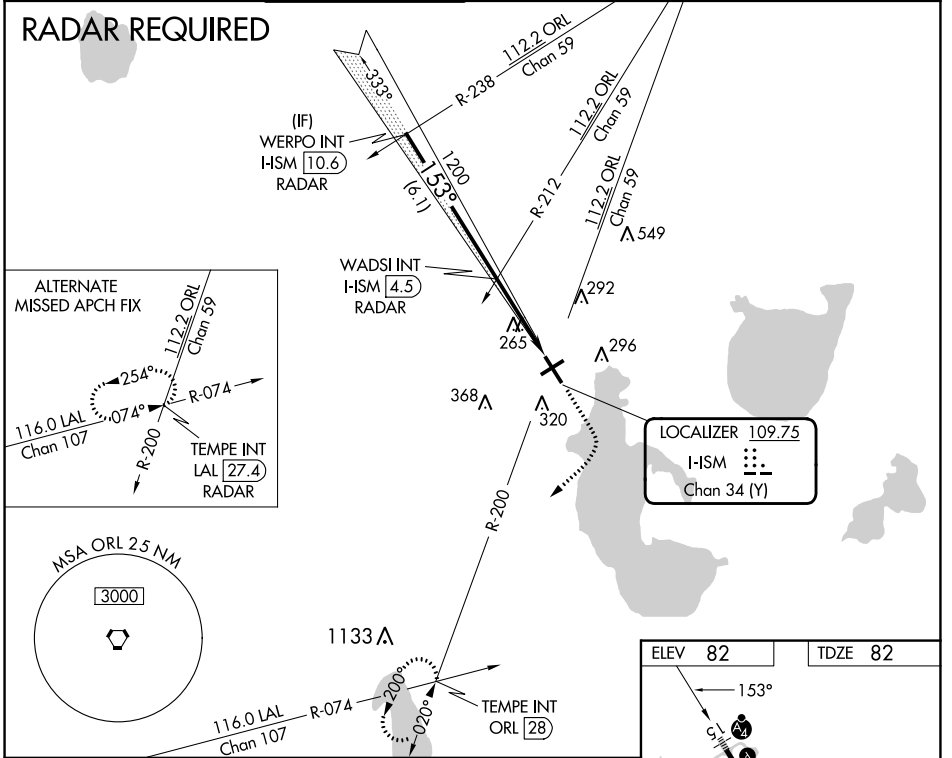
LOC/DME I-ISM 109.75 Chan 34 (Y)	APP CRS 153°	Rwy Idg TDZE Apt Elev	6001 82 82
--	------------------------	-----------------------------	---------------------------------------

ILS or LOC RWY 15

KISSIMMEE GATEWAY (ISM)

⚠ VDP NA with Orlando Intl altimeter setting. When local altimeter setting not received, use Orlando Intl altimeter setting and increase all DA to 309 feet, and all MDA 40 feet; increase Circling Cat C visibility 1/2 SM.	MALSF 	MISSED APPROACH: Climb to 600 then climbing right turn to 2200 on heading 240° and ORL VORTAC R-200 to TEMPE INT/ORL 28 DME and hold.				
ATIS 128.775	ORLANDO APP CON 119.4 351.9	KISSIMMEE TOWER * 124.45 (CTAF)	CLNC DEL 121.7	CLNC DEL 123.95 (when twr closed)	GND CON 121.7	UNICOM 122.95

RADAR REQUIRED



CATEGORY	A	B	C	D
S-ILS 15	282-3/4 200 (200-3/4)			
S-LOC 15	440-3/4 358 (400-3/4)		440-1/4 358 (400-1/4)	
CIRCLING	680-1 598 (600-1)	680-1 1/2 598 (600-1 1/2)	700-2 618 (700-2)	

REIL Rwy 6, 24 and 33

MIRL Rwy 15-33 and 6-24

FAF to MAP 3.3 NM

Knots	60	90	120	150	180
Min:Sec	3:18	2:12	1:39	1:19	1:06

SE-3, 26 DEC 2024 to 23 JAN 2025

SE-3, 26 DEC 2024 to 23 JAN 2025