

APP CRS <b>236°</b>	Rwy Idg <b>3000</b>
	TDZE <b>1022</b>
	Apt Elev <b>1031</b>

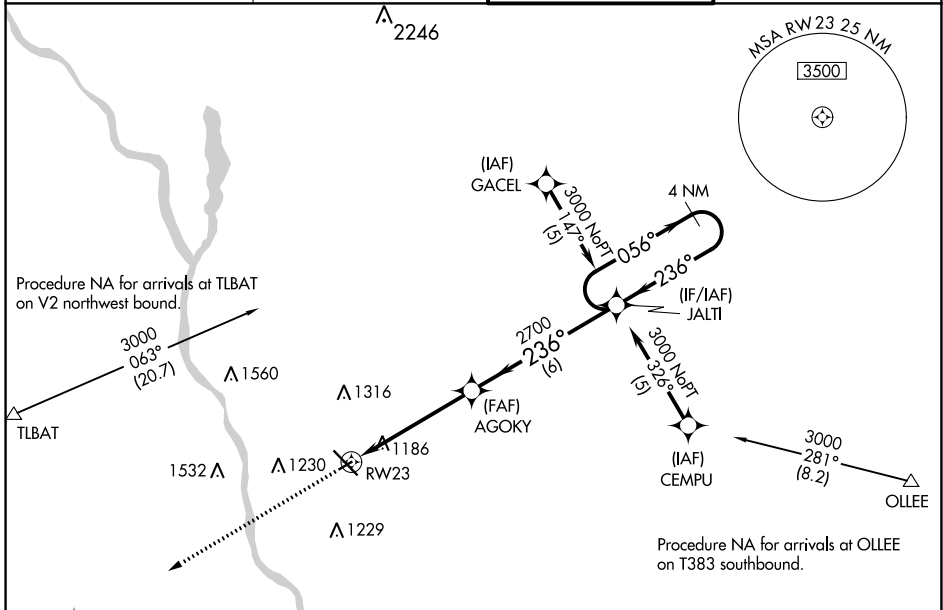
# RNAV (GPS) RWY 23

ST CLOUD RGNL (STC)

**⚠** Rwy 23 helicopter visibility reduction below 3/4 SM NA. DME/DME RNP-0.3 NA. VDP NA when using Little Falls altimeter setting. When local altimeter setting not received, use Little Falls altimeter setting and increase all MDA 80 feet and increase LNAV Cat C visibility 3/8 SM and Circling Cat C visibility 1/4 SM.

**MISSED APPROACH:** Climb to 3000 direct HUBOX and hold.

ATIS <b>119.375</b>	MINNEAPOLIS CENTER <b>121.05 235.775</b>	ST. CLOUD TOWER ★ <b>118.25 (CTAF) 0</b>	GND CON <b>123.75</b>
------------------------	---	---	--------------------------

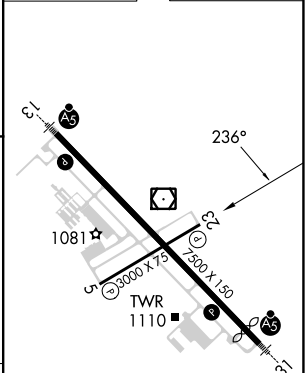
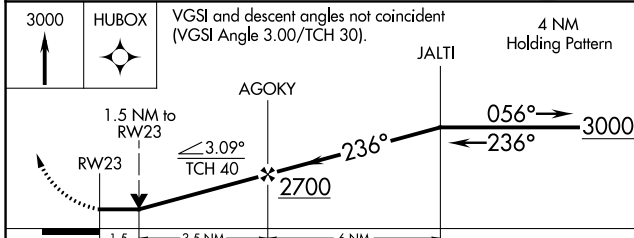


NC-1, 26 DEC 2024 to 23 JAN 2025

NC-1, 26 DEC 2024 to 23 JAN 2025



ELEV 1031	<b>D</b> TDZE 1022
-----------	--------------------



CATEGORY	A	B	C	D
LNAV MDA	1540-1	518 (600-1)	1540-1 3/8 518 (600-1 3/8)	NA
CIRCLING	1540-1	509 (600-1)	1620-1 1/2 589 (600-1 1/2)	NA

MIRL Rwy 5-23 **0**  
HIRL Rwy 13-31 **0**