

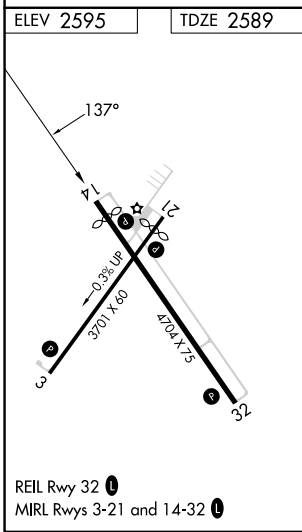
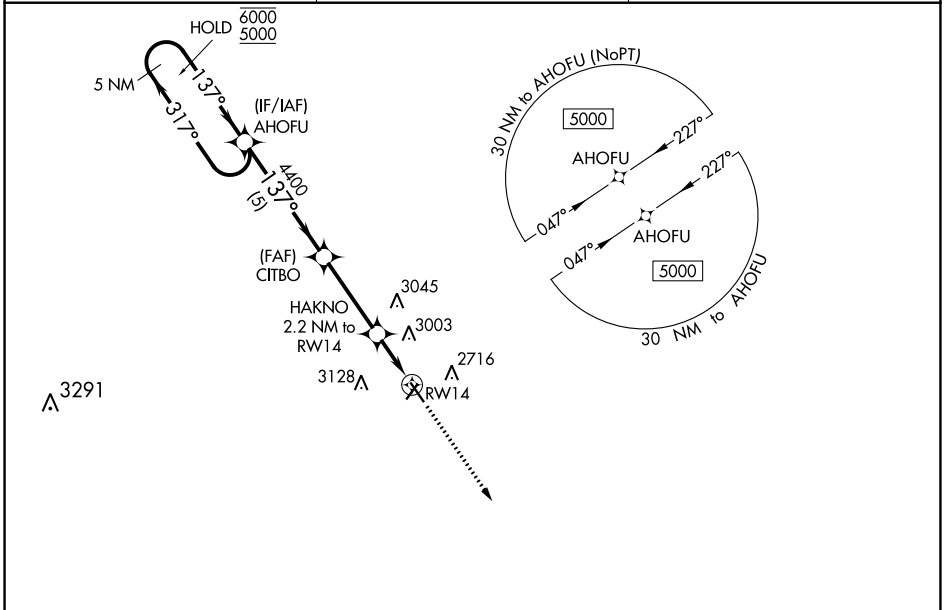
WAAS CH <b>61037</b> <b>W14A</b>	APP CRS <b>137°</b>	Rwy Idg TDZE Apt Elev	<b>4320</b> <b>2589</b> <b>2595</b>
--	------------------------	-----------------------------	---

# RNAV (GPS) RWY 14

MILLER FLD (VTN)

RNP APCH.	MISSED APPROACH: Climb to 5000 direct GIYIT and hold.
<p>For uncompensated Baro-VNAV systems, LNAV/VNAV NA below -25°C or above 54°C . Rwy 14 helicopter visibility reduction below ¾ SM NA.</p>	

ASOS <b>118.075</b>	DENVER CENTER <b>127.95 338.2</b>	UNICOM <b>122.8 (CTAF) 0</b>
------------------------	--------------------------------------	---------------------------------



ELEV 2595	TDZE 2589				
<p>5 NM Holding Pattern</p> <p>6000 ← 317°</p> <p>5000 → 137°</p> <p>GP 3.00°</p> <p>TCH 40</p>		AHOFU	CITBO	HAKNO	GIYIT
		4400	4400	2.2 NM to RWY 14	5000
				*1.7 NM to RWY 14	*LNAV only
					RWY 14
CATEGORY	A	B	C	D	
LPV DA	2861-1	272 (300-1)			NA
LNAV/VNAV DA	3239-2¼	650 (700-2¼)			NA
LNAV MDA	3160-1	571 (600-1)			NA
<input checked="" type="checkbox"/> CIRCLING	3160-1 565 (600-1)	3560-1½ 965 (1000-1½)			NA

NC-2, 26 DEC 2024 to 23 JAN 2025

NC-2, 26 DEC 2024 to 23 JAN 2025