

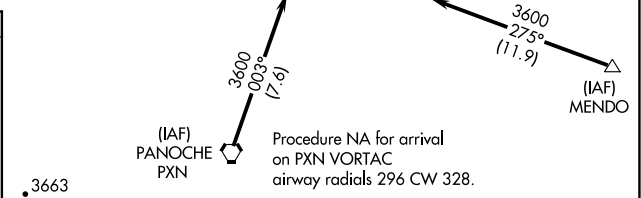
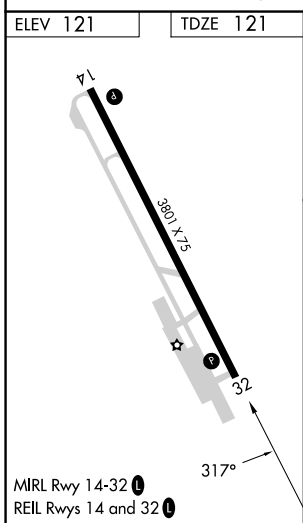
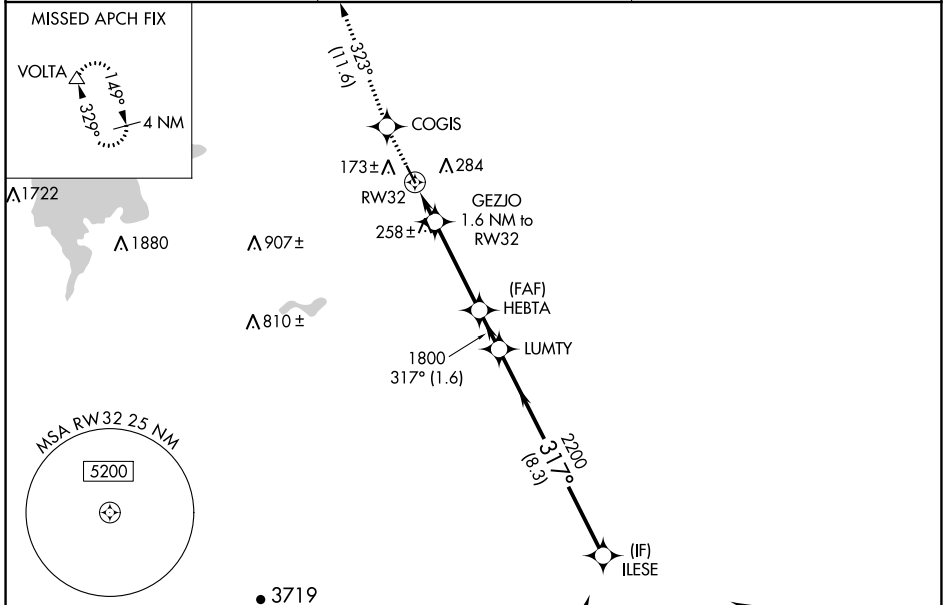
APP CRS 317°	Rwy Idg 3801
	TDZE 121
	Apt Elev 121

RNAV (GPS) RWY 32

LOS BANOS MUNI (LSN)

RNP APCH.	<p>▼ Rwy 32 helicopter visibility reduction below 3/4 SM NA. VDP NA when using Merced Yosemite Rgnl altimeter setting. When local altimeter setting not received, use Merced Yosemite Rgnl altimeter setting and increase all MDA 60 feet, and all visibility 1/4 SM.</p> <p>▲ NA</p>	<p>MISSED APPROACH: Climb to 3000 direct COGIS and on track 323° to VOLTA and hold.</p>
-----------	---	---

AWOS-3 118.675	NORCAL APP CON 120.95 269.45	UNICOM 122.8 (CTAF) 0
--------------------------	--	---------------------------------



3000	COGIS	VOLTA	ILESE
↑	✧	△	
	fr 323°		
	GEZJO 1.6 NM to RW32	HEBTA	LUMTY
	RW32		
	1.1 NM to RW32	3.00° TCH 38	317°
	680	1800	2200
	1.1 NM	0.5 NM	3.6 NM
		1.6 NM	8.3 NM
CATEGORY	A	B	C
LNAV MDA	520-1	399 (400-1)	520-1 1/8 399 (400-1 1/8)