

| | | |
|--|------------------------|---|
| WAAS CH 70423 W35A | APP CRS 352° | Rwy Idg 4305 TDZE 1616 Apt Elev 1616 |
|--|------------------------|---|

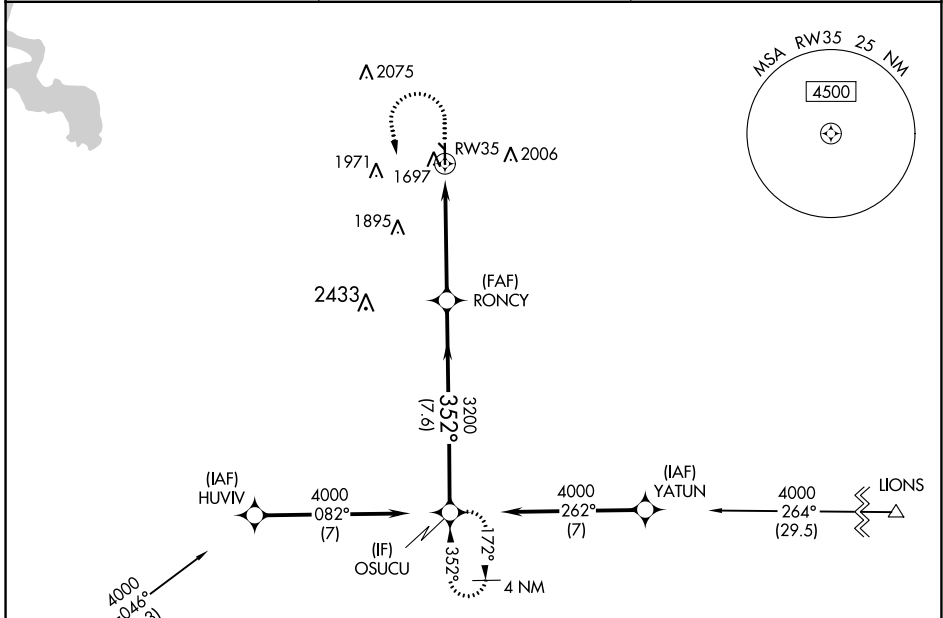
RNAV (GPS) RWY 35

CLINTON RGNL (CLK)

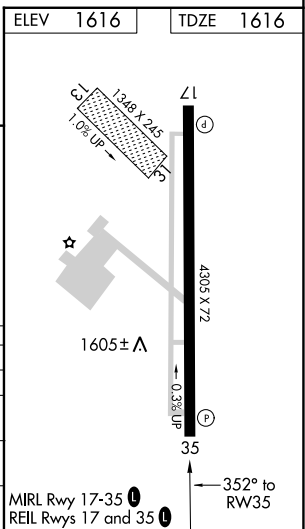
⚠ DME/DME RNP-0.3 NA. For uncompensated Baro-VNAV systems, LNAV/VNAV NA below -12°C (11°F) or above 54°C (130°F). Circling NA to Rwy 13 and 31. When local altimeter setting not received, use Weatherford altimeter setting; Increase DA to 1902 and all visibilities ½ mile; increase all MDA 40 feet and visibility Cat C ¼ mile. Baro-VNAV and VDP NA when using Weatherford altimeter setting.

MISSED APPROACH: Climb to 2400 then climbing left turn to 4000 direct OSUCU and hold.

| | | |
|--------------------------|--|---------------------------------|
| AWOS-3 119.225 | FORT WORTH CENTER 128.4 269.37 | UNICOM 122.8 (CTAF) 0 |
|--------------------------|--|---------------------------------|



| | | | | |
|-------------------|-------------|-----------------|--|-----------------|
| ELEV 1616 | TDZE 1616 | | | |
| 2400 | 4000 | OSUCU | VGSI and RNAV glidepath not coincident (VGSI Angle 3.00/TCH 40). | OSUCU |
| *LNAV only. | | *1.3 NM to RW35 | RONCY 3200 | 4000 |
| RW35 | | 1.3 NM | 3.6 NM | 7.6 NM |
| GP 3.00° | TCH 40 | | | |
| CATEGORY | A | B | C | D |
| LPV DA | 1866-7/8 | 250 (300-7/8) | | NA |
| LNAV/VNAV DA | 1870-7/8 | 254 (300-7/8) | | NA |
| LNAV MDA | 2040-1 | 424 (500-1) | 2040-1 1/4 | 424 (500-1 1/4) |
| C CIRCLING | 2100-1 | 2220-1 | 2320-2 | NA |
| | 484 (500-1) | 604 (700-1) | 704 (800-2) | |



SC-1, 26 DEC 2024 to 23 JAN 2025

SC-1, 26 DEC 2024 to 23 JAN 2025