

WAAS CH <b>49035</b> <b>W27A</b>	APP CRS <b>273°</b>	Rwy Idg TDZE <b>1198</b> Apt Elev <b>1198</b>	<b>3499</b>
--	------------------------	---	-------------

# RNAV (GPS) RWY 27

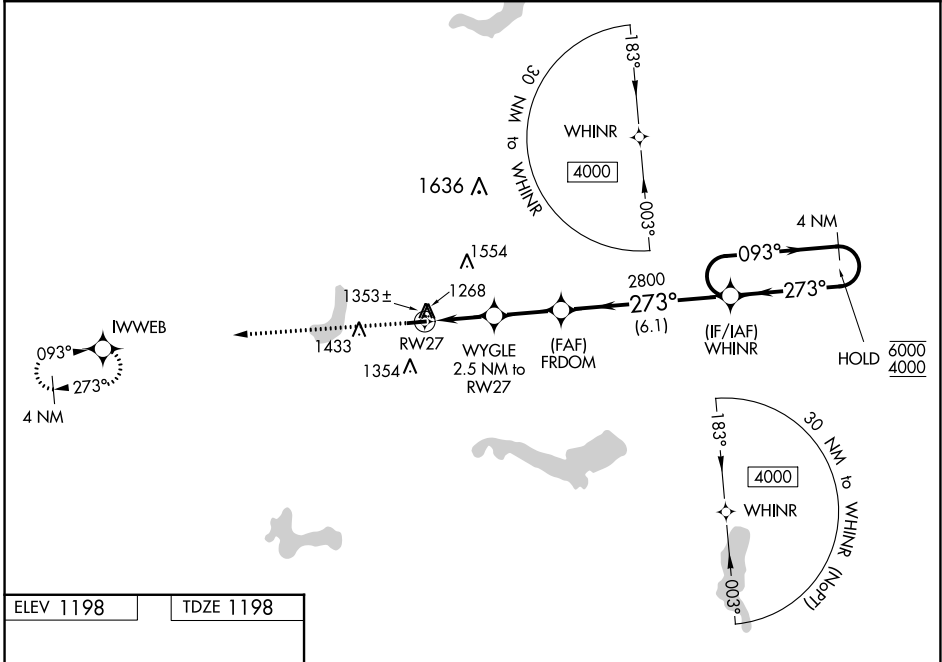
PORTAGE COUNTY (POV)

RNP APCH - GPS.

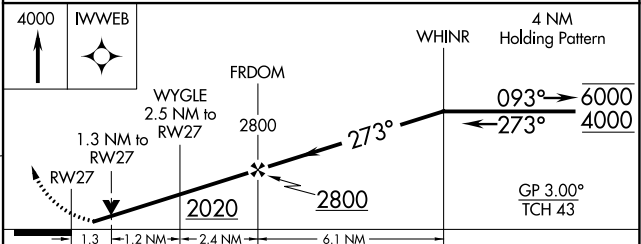
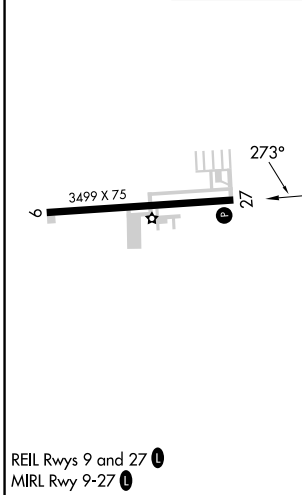
**⚠** Baro-VNAV and VDP NA when using CAK altimeter setting. For uncompensated Baro-VNAV systems, LNAV/VNAV NA below -17°C or above 54°C. Rwy 27 helicopter visibility reduction below 3/4 SM NA. When local altimeter setting not received, use CAK altimeter setting and increase LPV DA to 1546 feet. Increase LNAV/VNAV DA to 1603 feet and all visibilities 1/2 SM. Increase all MDAs 60 feet; and Circling visibility Cat C 1/4 SM.

**MISSED APPROACH:** Climb to 4000 direct IWWEB and hold, continue climb-in-hold to 4000.

AWOS-3 <b>118.675</b>	CLEVELAND APP CON* <b>125.5 371.875</b>	CLNC DEL <b>125.65</b>	UNICOM <b>123.05 (CTAF) 0</b>
--------------------------	--	---------------------------	----------------------------------



ELEV 1198	TDZE 1198
-----------	-----------



CATEGORY	A	B	C	D
LPV DA	1496-1 298 (300-1)			NA
LNAV/VNAV DA	1553-1 355 (400-1)			NA
LNAV MDA	1640-1	442 (500-1)	1640-1 3/8 442 (500-1 3/8)	NA
<b>C</b> CIRCLING	1740-1 542 (600-1)	1800-1 602 (700-1)	1860-1 3/4 662 (700-1 3/4)	NA

REIL Rwy 9 and 27 **0**  
MIRL Rwy 9-27 **0**