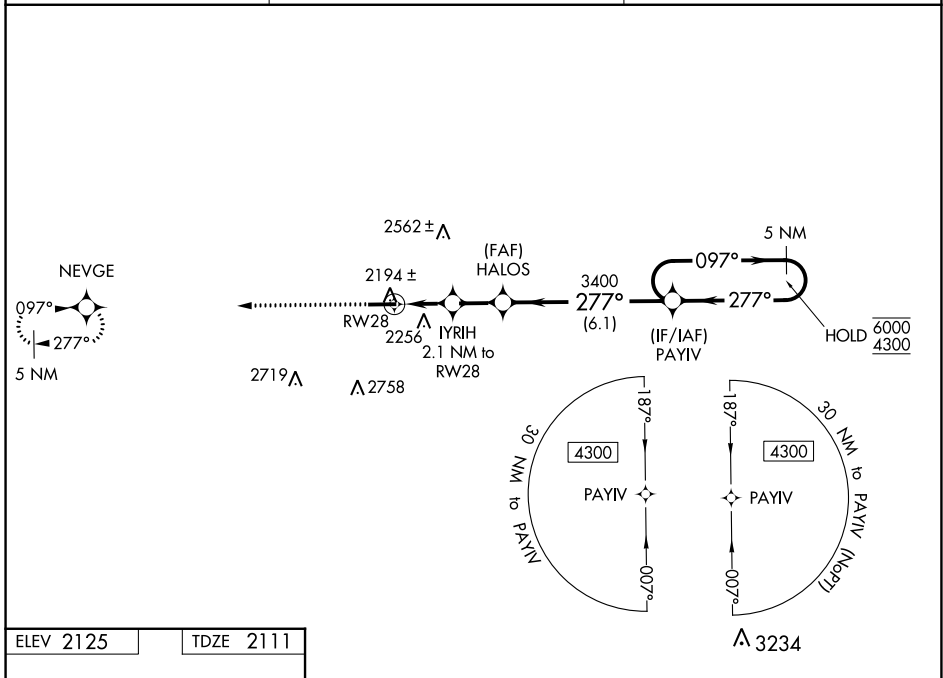


WAAS CH <b>49102</b> <b>W28A</b>	APP CRS <b>277°</b>	Rwy Idg TDZE Apt Elev	<b>5300</b> <b>2111</b> <b>2125</b>
--	------------------------	-----------------------------	---

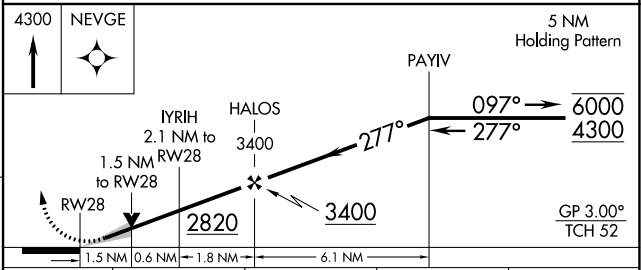
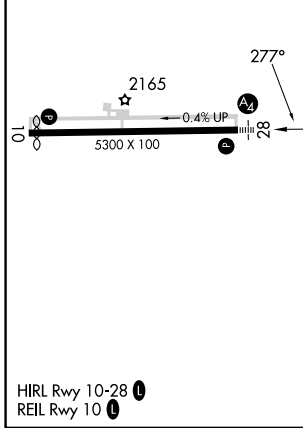
# RNAV (GPS) RWY 28

WELLSVILLE MUNI/TARANTINE FLD (E/LZ)

RNP APCH - GPS.		MALS	MISSED APPROACH: Climb to 4300 direct NEVGE and hold.
<p><b>⚠</b> Inop table does not apply to LPV and LNAV/VNAV. For uncompensated Baro-VNAV systems, LNAV/VNAV NA below -20°C or above 54°C.</p>		<b>A2</b>	
ASOS <b>119.275</b>	CLEVELAND CENTER <b>124.325 353.85</b>	UNICOM <b>123.0 (CTAF)</b>	



ELEV 2125	TDZE 2111
-----------	-----------



CATEGORY	A	B	C	D
LPV DA		2311-3/4	200 (200-3/4)	
LNAV/VNAV DA		2369-3/4	258 (300-3/4)	
LNAV MDA	2460-3/4	349 (400-3/4)	2460-1/4	349 (400-1/4)
<b>C</b> CIRCLING	2640-1 515 (600-1)	2660-1 535 (600-1)	2880-2/4 755 (800-2/4)	3060-3 935 (1000-3)

NE-2, 26 DEC 2024 to 23 JAN 2025

NE-2, 26 DEC 2024 to 23 JAN 2025