

KILNS FIVE DEPARTURE (RNAV)

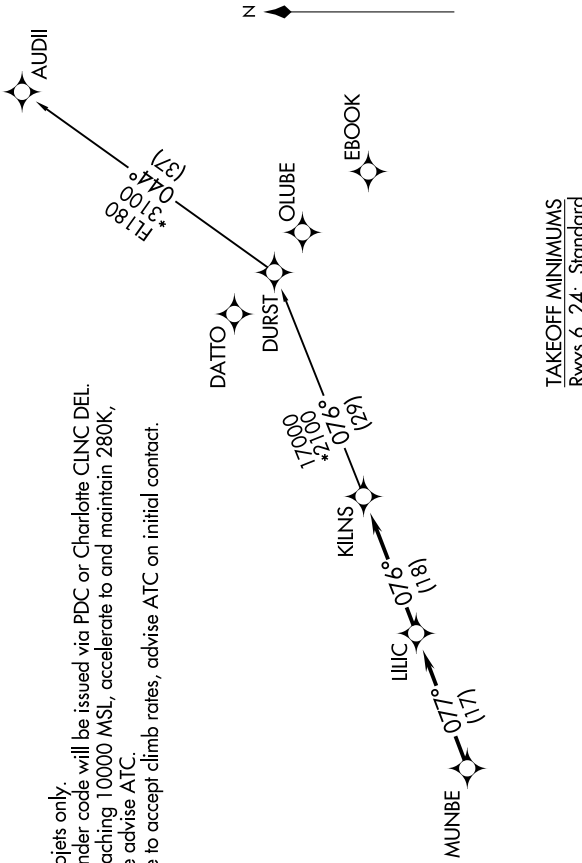
SE-2, 26 DEC 2024 to 23 JAN 2025

CHARLOTTE DEP CON
120.05 307.8
AWOS-3
120.825
GCO
121.725
UNICOM (CTAF)
122.725

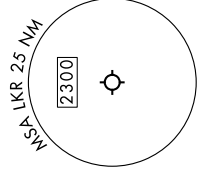
RNAV 1 - DME/DME/IRU or GPS.
RADAR required.

- NOTE: For turbojets only.
- NOTE: Transponder code will be issued via PDC or Charlotte CLNC DEL.
- NOTE: Upon reaching 10000 MSL, accelerate to and maintain 280K, if unable advise ATC.
- NOTE: If unable to accept climb rates, advise ATC on initial contact.

**TOP ALTITUDE:
3000**



TAKEOFF MINIMUMS
Rwys 6, 24: Standard.



DEPARTURE ROUTE DESCRIPTION

Climb on heading assigned by ATC, on RADAR vectors to **MUNBE**, then on depicted route to **KILNS**, then on **AUDII** Transition. Maintain 3000. Expect clearance to filed altitude within 10 minutes after departure.

AUDII TRANSITION (KILNS5-AUDII)

NOTE: Chart not to scale.

KILNS FIVE DEPARTURE (RNAV)

SE-2, 26 DEC 2024 to 23 JAN 2025